

Oskarshamn site investigation

Geophysical borehole logging in boreholes KLX20A, KLX18A, KLX11B, KLX09B, KLX09D, KLX09F, HLX38, HLX39, HLX40 and HLX41

Uffe Torben Nielsen, Jørgen Ringgaard
RAMBØLL

December 2006

Svensk Kärnbränslehantering AB

Swedish Nuclear Fuel
and Waste Management Co
Box 5864

SE-102 40 Stockholm Sweden

Tel 08-459 84 00

+46 8 459 84 00

Fax 08-661 57 19

+46 8 661 57 19



Oskarshamn site investigation

Geophysical borehole logging in boreholes KLX20A, KLX18A, KLX11B, KLX09B, KLX09D, KLX09F, HLX38, HLX39, HLX40 and HLX41

Uffe Torben Nielsen, Jørgen Ringgaard
RAMBØLL

December 2006

Keywords: Geophysical logging.

This report concerns a study which was conducted for SKB. The conclusions and viewpoints presented in the report are those of the authors and do not necessarily coincide with those of the client.

A pdf version of this document can be downloaded from www.skb.se

Abstract

Geophysical borehole logging has been performed in boreholes KLX20A, KLX18A, KLX11B, KLX09B, KLX09D, KLX09F, HLX38, HLX39, HLX40 and HLX41 all situated in Laxemar in Oskarshamn, Sweden.

The objective of the survey is to determine the physical properties of the rock mass around the borehole, e.g. to determine rock types and quantify the fracture frequency and localise deformation zones in the rock. Geophysical borehole logging was used to measure changes in physical properties in the borehole fluid and the bedrock surrounding the boreholes.

All boreholes were recorded from Top Of Casing (TOC). The logging in KLX20A was recorded to app. 457 m, KLX18A was recorded to app. 610 m, KLX11B was recorded to app. 100 m, KLX09B was recorded to app. 100 m, KLX09D was recorded to app. 120 m, KLX09F was recorded to app. 152 m, HLX38 was recorded to app. 200 m, HLX39 was recorded to app. 200 m, HLX40 was recorded to app. 200 m and HLX41 was recorded to app. 200 m.

The present report comprises a description of the applied equipment and the performed logging program, the fieldwork, data delivery and a presentation and discussion of the results.

Composite sheets of all the processed logs are included in Appendix 1 to 10.

Sammanfattning

Geofysisk borrhålsloggning har genomförts i borrhålen KLX20A, KLX18A, KLX11B, KLX09B, KLX09D, KLX09F, HLX38, HLX39, HLX40 och i HLX41 i delområde Laxemar, Oskarshamn.

Syftet med geofysisk borrhålsloggning är att bestämma bergets fysikaliska egenskaper för att bestämma bergartsfördelningen i det genomborrade bergpartiet samt att kvantifiera sprickfrekvensen och att lokalisera deformationszoner. Med geofysisk borrhålsloggning mäts bergets och borrhålsvattnets fysikaliska egenskaper i borrhålet och omgivande berg.

Den geofysiska borrhålsloggningen genomfördes i KLX20A från TOC till 457 m, i KLX18A från TOC till 610 m, i KLX11B från TOC till 100 m, i KLX09B från TOC till 100 m, i KLX09D från TOC till 120 m, i KLX09F från TOC till 152 m, i HLX38 från TOC till 200 m, i HLX39 från TOC till 200 m, i HLX40 från TOC till 200 m och i HLX41 från TOC till 200 m.

Rapporten beskriver använd utrustning, genomfört loggningsprogram, fältarbete, leverans av data och en diskussion av resultatet.

Processerade loggar presenteras i Appendix 1 till 10.

Contents

1	Introduction	7
2	Objective and scope	11
3	Equipment	13
4	Execution	15
4.1	General	15
4.2	Nonconformities	15
5	Results	17
5.1	Presentation	17
5.2	Orientation, alignment and stretch of logs	17
5.2.1	Orientation of images	17
5.2.2	Overlapping data	18
5.2.3	Alignment of data	18
5.2.4	Stretch of logs	18
5.2.5	Removing of data	18
5.2.6	Repicking of sonic log	18
5.3	Calculated log curves	18
5.4	Borehole KLX20A	18
5.5	Borehole KLX18A	20
5.6	Borehole KLX11B	20
5.7	Borehole KLX09B	21
5.8	Borehole KLX09D	21
5.9	Borehole KLX09F	21
5.10	Borehole HLX38	21
5.11	Borehole HLX39	22
5.12	Borehole HLX40	22
5.13	Borehole HLX41	22
6	Data delivery	23
Appendix 1	Borehole KLX20A. Drawing no. 1.1. Borehole logs	27
Appendix 2	Borehole KLX18A. Drawing no. 2.1. Borehole logs	33
Appendix 3	Borehole KLX11B. Drawing no. 3.1. Borehole logs	41
Appendix 4	Borehole KLX09B. Drawing no. 4.1. Borehole logs	45
Appendix 5	Borehole KLX09D. Drawing no. 5.1. Borehole logs	49
Appendix 6	Borehole KLX09F. Drawing no. 6.1. Borehole logs	53
Appendix 7	Borehole HLX38. Drawing no. 7.1. Borehole logs	57
Appendix 8	Borehole HLX39. Drawing no. 8.1. Borehole logs	61
Appendix 9	Borehole HLX40. Drawing no. 9.1. Borehole logs	65
Appendix 10	Borehole HLX41. Drawing no. 10.1. Borehole logs	69

1 Introduction

This document reports the results gained by the geophysical borehole logging in boreholes KLX20A, KLX18A, KLX11B, KLX09B, KLX09D, KLX09F, HLX38, HLX39, HLX40 and HLX41, which is one of the activities performed within the site investigation at Oskarshamn. The work was carried out in accordance with activity plan AP PS 400-06-061 (SKB internal controlling document). In Table 1-1 controlling documents for performing this activity are listed.

All measurements were conducted by RAMBØLL during the period May 31 to June 3 and July 5 and 6, 2006. The boreholes were recorded from Top Of Casing (TOC) to the bottom of the borehole. The technical data from the boreholes are shown in Tables 1-2 to 1-4. The location of the boreholes is shown in Figure 1-1.

The delivered raw and processed data have been inserted in the database of SKB (SICADA) and data are traceable by the activity plan number.

Table 1-1. Controlling documents for the performance of the activity (SKB internal controlling documents).

Activity plan	Number	Version
Geofysisk borrhålsloggning i KLX20A, KLX18A, KLX11B, KLX09B, KLX09D, KLX09F, HLX38 och HLX40 samt option för HLX39 och HLX41	AP PS 400-06-061	1.0
Method descriptions	Number	Version
Metodbeskrivning för geofysisk borrhålsloggning	SKB MD 221.002	2.0

Table 1-2. Technical data for the boreholes.

Borehole Parameter	KLX20A	KLX18A	KLX11B
Coordinates (RT90)	X: 6366334.57	X: 6366413.39	X: 6366339.51
	Y: 1546604.89	Y: 1547966.35	Y: 1546604.89
Elevation (RHB70)	Z: 27.24	Z: 21.01	Z: 27.27
Inclination (from horizontal)	-49.81°	-82.04°	-89.87°
Azimuth	270.61°	271.40°	136.16°
Length	457.92 m	611.28 m	100.20 m
Borehole diameter	∅ 341 mm (0.3–6 m)	∅ 340 mm (0.3–9.3 m)	∅ 117 mm (0.3–1.21 m)
	∅ 253 mm (6–99.9 m)	∅ 254 mm (9.3–11.83 m)	∅ 96 mm (1.21–2.54 m)
	∅ 162 mm (99.9–99.91 m)	∅ 198 mm (11.83–99.83 m)	∅ 76 mm (2.54–100.2 m)
	∅ 86 mm (99.91–100.9 m)	∅ 163 mm (99.83–99.93 m)	
	∅ 76 mm (100.9–457.92 m)	∅ 86 mm (99.93–101.35 m)	
Casing	∅ 323/310 mm (0.3–6 m)	∅ 323/311 mm (0.3–9.3 m)	∅ 89/77 mm (0–2.54 m)
	∅ 208/200 mm (0.0–99.47 m)	∅ 208/200 mm (0.0–11.83 m)	
	∅ 208/170 mm (99.47–99.50 m)	Cone from 96.53–101.35 (∅100/ ∅ 80 mm).	
	Cone from 96.08–100.9 (∅100/ ∅ 80 mm).		
Cleaning level	Level 1	Level 1	Level 1

Table 1-3. Technical data for the boreholes.

Borehole Parameter	KLX09B	KLX09D	KLX09F
Coordinates (RT90)	X: 6367329.07	X: 6367336.99	X: 6367318.02
	Y: 1548859.01	Y: 1548878.22	Y: 1548817.26
Elevation (RHB70)	Z: 23.61	Z: 23.10	Z: 19.57
Inclination (from horizontal)	-89.54°	-59.62°	-59.14°
Azimuth	21.25°	270.15°	90.67°
Length	100.22 m	121.02 m	152.3 m
Borehole diameter	Ø 116 mm (0.3–2.48 m)	Ø 96 mm (0.3–9.75 m)	Ø 96 mm (0.3–9.00 m)
	Ø 96 mm (2.48–10.74 m)	Ø 76 mm (9.75–121.02 m)	Ø 76 mm (9.00–152.3 m)
	Ø 76 mm (10.74–100.22 m)		
Casing	Ø 89/77 mm (0–10.74 m)	Ø 89/77 mm (0–9.75 m)	Ø 89/77 mm (0–9.00 m)
Cleaning level	Level 1	Level 1	Level 1

Table 1-4. Technical data for the boreholes.

Borehole Parameter	HLX38	HLX39	HLX40	HLX41
Coordinates (RT90)	X: 6365868.86	X: 6366887.87	X: 6366906.76	X: 6367013.20
	Y: 1547146.08	Y: 1546880.48	Y: 1546943.95	Y: 1547017.61
Elevation (RHB70)	Z: 11.53	Z: 27.04	Z: 25.74	Z: 21.80
Inclination (from horizontal)	-59.39°	-59.35°	-59.57°	-59.09°
Azimuth	110.04°	14.29°	11.03°	208.29°
Length	199.5 m	199.3 m	199.5 m	199.5 m
Borehole diameter	Ø 190 mm (0–15.1 m)	Ø 190 mm (0.3–6.1 m)	Ø 190 mm (0.3–6.1 m)	Ø 190 mm (0.3–6.1 m)
	Ø 140 mm (15.1–103.2 m)	Ø 138 mm (6.1–199.3 m)	Ø 138 mm (6.1–199.5 m)	Ø 140 mm (6.1–91.2 m)
	Ø 139 mm (103.2–199.5 m)			Ø 139 mm (91.2–199.5 m)
Casing	Ø 168/160 mm (0–14.93 m)	Ø 168/160 mm (0–5.93 m)	Ø 168/160 mm (0–5.93 m)	Ø 168/160 mm (0–5.93 m)
	Ø 168/140 mm (14.93–15.02 m)	Ø 168/140 mm (5.93–6.02 m)	Ø 168/140 mm (5.93–6.02 m)	Ø 168/140 mm (5.93–6.02 m)
Cleaning level	Level 1	Level 1	Level 1	Level 1



Figure 1-1. Overview over borehole KLX20A, KLX18A, KLX11B, KLX09B, KLX09D, KLX09F, HLX38, HLX39, HLX40 and HLX41 in the Laxemar subarea.

2 Objective and scope

The objective of the survey is to both receive information of the borehole itself, and from the rock mass around the borehole. Geophysical borehole logging was used to measure changes in physical properties in the borehole fluid and the bedrock surrounding the boreholes. Acoustic televiewer was used for determination of the 360° caliper and to determine the length marks in the core-drilled boreholes KLX20A, KLX18A and KLX11B.

This field report describes the equipment used as well as the measurement procedures. Geophysical borehole logging data is presented in graphs as a function of depth on drawings shown in Table 2-1.

Table 2-1. Appendix and drawing no.

Borehole	Drawing no.	Appendix
KLX20A	1.1	1
KLX18A	2.1	2
KLX11B	3.1	3
KLX09B	4.1	4
KLX09D	5.1	5
KLX09F	6.1	6
HLX38	7.1	7
HLX39	8.1	8
HLX40	9.1	9
HLX41	10.1	10

3 Equipment

The geophysical borehole logging program was performed with up to 7 multi tool probes and resulted in a suite of 16 log types, listed in Table 5-1. The tools and recorded logs are listed in Table 3-1.

Table 3-1. Logging tools and logs recorded.

Tool	Recorded logs	Dimension	Source detector spacing and type	Tool position in borehole	Tool used in borehole
Century 8144 Normal resistivity	Normal resistivity (16 and 64 inch), single point resistance, self potential and natural gamma.	237×5.3 cm			All boreholes
Century 8622 Magnetic susceptibility	Magnetic susceptibility, natural gamma.	203×4.1 cm			All boreholes
Century 9042 Fluid temperature and fluid resistivity	Fluid temperature, fluid resistivity and natural gamma.	137×4.1 cm			All boreholes
Century 9072 3 m focused guard	3 m focused guard log resistivity and natural gamma.	310×6.4 cm			All boreholes
Century 9139 Compensated gamma density	Compensated gamma density, natural gamma, 140 cm focused guard log resistivity, 1-arm caliper.	280.3×5.6 cm	20.3 cm 200 mCi Cs137	Sidewall Gamma source focused	All boreholes
Century 9310 Sonic	Full wave form travel-time providing P and S-wave velocity picking, compensated P-wave travel-time and natural gamma.	300×6.0 cm	Near 91.4 cm Far 121.9 cm	Centralized	All boreholes
RG 25 112 000 HiRAT Acoustic televiewer	Full waveform acoustic amplitude and travel-time, 360° orientated acoustic image, 360° very high resolution caliper, borehole azimuth and dip and natural gamma.	246×4 cm		Centralized	KLX20A, KLX18A and KLX11B

4 Execution

4.1 General

In general the measurement procedures follow the SKB method description (MD 221.002, SKB internal controlling document). The logging program was executed in the period May 31 to June 3 and July 5 and 6, 2006. All relevant logging events are described in the daily report sheets delivered to SICADA and are traceable by the activity plan number.

The fluid resistivity and temperature logs are recorded in downward direction, as the first log run. All other log types are recorded running the tool in upward direction in the borehole.

The applied logging equipment was calibrated and cleaned before arriving at the site according to SKB cleaning level 2 (SKB internal controlling document SKB MD 600.004). Furthermore, all equipment was wiped with alcohol before it was lowered into the borehole.

For control, each log run is normally recorded both in down and in upward direction using the down run as a repeat section. For logging density tool 9139 recording a repeat section in upward direction controls the data. The depth of the probe in the borehole is shown on both the recording computer and the winch. On the winch the tension of the cable is also shown. The winch will automatically stop, if the tension changes rapidly. The tension was recorded on all log runs using Century equipment, except tool 9310.

All data was recorded with max.10 cm sample interval. The speed of the logging for the 9139 tool was 5 m/min, for the 8622 tool 20 m/min and for all other tools 10 m/min.

4.2 Nonconformities

The logging has been performed in accordance with the activity plan AP PS 400-06-061.

5 Results

5.1 Presentation

All relevant logging events were described in the daily report sheets, which were delivered separately.

Logs presented in drawings no. 1.1–10.1 are presented in Table 5-1.

5.2 Orientation, alignment and stretch of logs

5.2.1 Orientation of images

The orientation of the results from the HiRAT Acoustic tool, are processed in the tool while recording, using the magnetometers and accelerometers in the tool.

Table 5-1. Logs presented in drawings no. 1.1 through 10.1 in Appendices 1 to 10.

Log	Log name short	Unit	Tool	Recorded/ calculated in borehole
Fluid temperature	TEMP(FL)	deg C	9042	All
Fluid resistivity	RES(FL)	ohm-m	9042	All
Natural gamma	GAM(NAT)	μR/h	9042	All
Normal resistivity 16 inch	RES(16N)	ohm-m	8144	All
Normal resistivity 64 inch	RES(64N)	ohm-m	8144	All
Lateral resistivity	LATERAL	ohm-m	8144	All
Single point resistance	SPR	Ohm	8144	All
Self potential	SP	V	8144	KLX20A, KLX18A, KLX11B, KLX09B, KLX09D, KLX09F
Magnetic susceptibility	MAGSUSCEP	SI×10 ⁻⁵	8622	All
Caliper, 1-arm	CALIPER1	mm	9139	All
Gamma-gamma density	DENSITY	kg/m ³	9139	All
Focused guard log resistivity, 127 cm	RES(SG)	ohm-m	9139	All
Focused guard log resistivity, 300 cm	RES(DG)	ohm-m	9072	All
P-wave velocity	P-VEL	m/s	9310	All
Full wave form, near receiver	AMP(N)	μs	9310	All
Full wave form, far receiver	AMP(F)	μs	9310	All
Caliper, high resolution. 360°	CALIPER 3D	mm	HiRAT	KLX20A, KLX18A, KLX11B
High resolution 1D Caliper	CALIPER MEAN	mm	HiRAT	KLX20A, KLX18A, KLX11B
360° orientated acoustic travel time	Radius	100 ns	HiRAT	KLX20A, KLX18A, KLX11B
360° orientated acoustic amplitude	AMPLITUDE	–	HiRAT	KLX20A, KLX18A, KLX11B

5.2.2 Overlapping data

If the log data from one probe have been recorded in more than one file, the files are merged using events in both files. Overlapping in data is always used from the topmost-recorded file (overlapping data are never the mean value from two log runs).

5.2.3 Alignment of data

In order to obtain an exact length calibration, the track marks made while drilling are used. In boreholes without track marks, gamma events in the top and the bottom of the borehole are used. The connection between the track marks and the logs is obtained from the HiRAT Acoustic tool. The depths from the track marks and from the HiRAT tool are used to make a new length scale in WellCAD. All log files are shifted using the new length scale.

5.2.4 Stretch of logs

There is a minor difference in the length registration between up- and down runs for the used winch. The size of the defect is about 1.5 m/km. To compensate for this the logs are stretched using another new length scale for each tool. The length scale is made by using gamma events from the tool compared with the same gamma events from the HiRAT tool. The events in both files are matched, and the new length scale is made and added to the log. The bottom of the borehole is considered in stretching the logs in case that no data will occur below the bottom of the borehole.

5.2.5 Removing of data

The processing of the data includes removing of spikes, negative and unrealistic values and data in the casing.

5.2.6 Repicking of sonic log

The sonic velocity is normally calculated using an automatic picking routine in the sonic tool, 9310. In inclined boreholes the routine is often picking the wrong arrivals, due to so-called “road noise”. Therefore all sonic logs have been manually repicked in WellCAD using the full wave signal.

5.3 Calculated log curves

The different logs are calculated as described in Table 5-2.

5.4 Borehole KLX20A

In order to obtain an exact length calibration in borehole KLX20A, the reference track marks made while drilling are used. The correlation between the track marks and the logs is obtained from the HiRAT Acoustic tool.

The reference track marks in the borehole and the recorded track marks from the HiRAT are observed in the following depths, Table 5-3.

To compensate for the difference between the reference track marks and the recorded track marks the logs are stretched. The result from the stretching is a new length scale. The new length scale is applied to the HiRAT file. In this way a perfect match between given depths of the reference marks and the recorded data is obtained. By means of alignment of the observed gamma events in KLX20A, between all logruns, the obtained reference mark correlation is transferred to the other logs.

Table 5-2. Calculated log curves

Log	Description of log calculation
Caliper, 1-arm	The caliper was converted from [cm] to [mm] units by multiplying [cm] with 10.
Gamma-gamma density	The gamma-gamma was converted from [g/cm ³] to [kg/m ³] units by multiplying with 1,000.
Focused guard log resistivity, 140 cm	–
Natural gamma	The natural gamma log was converted from CPS to μ R/h by multiplying the constant 0.077. This constant was computed from the logs previously performed in borehole KLX02 located in Oskarshamn.
Fluid temperature	–
Fluid resistivity	–
Normal resistivity 16 inch	–
Normal resistivity 64 inch	–
Lateral resistivity	–
Single point resistance	–
Self-potential	The SP value was converted from [mV] to [V] by dividing with 1,000
Focused guard log resistivity, 300 cm	–
P-wave velocity	The P-VEL velocity is calculated using the difference in distance between the far and near receiver divided by the time difference between the first arrival from the far and near signal. $(121.9 \text{ cm} - 91.4 \text{ cm}) / (\text{Time}(\text{far}) - \text{Time}(\text{near}))$.
Full wave form, near receiver	–
Full wave form, far receiver	–
Magnetic susceptibility	The magnetic susceptibility was converted for CGS units to SI units by multiplying the CGS value by 4π .
Caliper, high resolution. 360°. CALIPER 3D	The caliper 3D is calculated using the acoustic travel time and the velocity in the borehole fluid. The velocity in the fluid is calculated using the fluid temperature and fluid conductivity.
High resolution 1D Caliper CALIPER MEAN	The caliper mean is calculated using the mean travel time from the acoustic televiewer, the fluid temperature, fluid velocity and the internal travel time in the acoustic televiewer.

Table 5-3. The reference track marks in the borehole and the recorded track marks from the HIRAT in borehole KLX20A.

Reference mark	HIRAT recorded
110	108.52
150	148.64
200	198.78
250	248.96
300	299.1
350	349.28
400	399.44
430	429.53

The complete log suite for borehole KLX20A is presented as composite log sheets in drawing no. 1.1 in Appendix 1. The logs presented in drawing no. 1.1 are listed in Table 5-1.

5.5 Borehole KLX18A

In order to obtain an exact length calibration in borehole KLX18A, the reference track marks made while drilling are used. The correlation between the track marks and the logs is obtained from the HiRAT Acoustic tool.

The reference track marks in the borehole and the recorded track marks from the HiRAT are observed in the following depths, Table 5-4.

To compensate for the difference between the reference track marks and the recorded track marks the logs are stretched. The result from the stretching is a new length scale. The new length scale is applied to the HiRAT file. In this way a perfect match between given depths of the reference marks and the recorded data is obtained. By means of alignment of the observed gamma events in KLX18A, between all logruns, the obtained reference mark correlation is transferred to the other logs.

The complete log suite for borehole KLX18A is presented as composite log sheets in drawing no. 2.1 in Appendix 2. The logs presented in drawing no. 2.1 are listed in Table 5-1.

5.6 Borehole KLX11B

In order to obtain an exact length calibration in borehole KLX11B, the reference track marks made while drilling are used. The correlation between the track marks and the logs is obtained from the HiRAT Acoustic tool.

The reference track marks in the borehole and the recorded track marks from the HiRAT are observed in the following depths, Table 5-5.

Table 5-4. The reference track marks in the borehole and the recorded track marks from the HiRAT in borehole KLX18A.

Reference mark	HIRAT recorded
150	149.602
200	199.72
250	249.866
300	299.966
350	350.098
400	400.246
450	450.354
500	500.496
550	550.617

Table 5-5. The reference track marks in the borehole and the recorded track marks from the HiRAT in borehole KLX11B.

Reference mark	HIRAT recorded
50.00	49.82
80.00	79.93

To compensate for the difference between the reference track marks and the recorded track marks the logs are stretched. The result from the stretching is a new length scale. The new length scale is applied to the HiRAT file. In this way a perfect match between given depths of the reference marks and the recorded data is obtained. By means of alignment of the observed gamma events in KLX11B, between all logruns, the obtained reference mark correlation is transferred to the other logs.

The complete log suite for borehole KLX11B is presented as composite log sheets in drawing no. 3.1 in Appendix 3. The logs presented in drawing no. 3.1 are listed in Table 5-1.

5.7 Borehole KLX09B

Using the natural gamma from the 9042 as reference, the natural gamma logs from the other probes are aligned to the same depth. A new depth scale is added to each log and afterwards the logs are stretched using the events shown in Table 5-6.

The complete log suite for borehole KLX09B is presented as composite log sheet in drawing no. 4.1 in Appendix 4. The logs presented in drawing no. 4.1 are listed in Table 5-1.

5.8 Borehole KLX09D

Using the natural gamma from the 9042 as reference, the natural gamma logs from the other probes are aligned to the same depth. A new depth scale is added to each log and afterwards the logs are stretched using different gamma events.

The complete log suite for borehole KLX09D is presented as composite log sheet in drawing no. 5.1 in Appendix 5. The logs presented in drawing no. 5.1 are listed in Table 5-1.

5.9 Borehole KLX09F

Using the natural gamma from the 9042 as reference, the natural gamma logs from the other probes are aligned to the same depth. A new depth scale is added to each log and afterwards the logs are stretched using different gamma events.

The complete log suite for borehole KLX09F is presented as composite log sheet in drawing no. 6.1 in Appendix 6. The logs presented in drawing no. 6.1 are listed in Table 5-1.

5.10 Borehole HLX38

Using the natural gamma from the 9042 as reference, the natural gamma logs from the other probes are aligned to the same depth. A new depth scale is added to each log and afterwards the logs are stretched using different gamma events.

The complete log suite for borehole HLX38 is presented as composite log sheet in drawing no. 7.1 in Appendix 7. The logs presented in drawing no. 7.1 are listed in Table 5-1.

Table 5-6. Gamma event in borehole KLX09B.

Events	Depths
mid event	55.05

5.11 Borehole HLX39

Using the natural gamma from the 9042 as reference, the natural gamma logs from the other probes are aligned to the same depth. A new depth scale is added to each log and afterwards the logs are stretched using different gamma events.

The complete log suite for borehole HLX39 is presented as composite log sheet in drawing no. 8.1 in Appendix 8. The logs presented in drawing no. 8.1 are listed in Table 5-1.

5.12 Borehole HLX40

Using the natural gamma from the 9042 as reference, the natural gamma logs from the other probes are aligned to the same depth. A new depth scale is added to each log and afterwards the logs are stretched using different gamma events.

The complete log suite for borehole HLX40 is presented as composite log sheet in drawing no. 9.1 in Appendix 9. The logs presented in drawing no. 9.1 are listed in Table 5-1.

5.13 Borehole HLX41

Using the natural gamma from the 9042 as reference, the natural gamma logs from the other probes are aligned to the same depth. A new depth scale is added to each log and afterwards the logs are stretched using different gamma events.

The complete log suite for borehole HLX41 is presented as composite log sheet in drawing no. 10.1 in Appendix 10. The logs presented in drawing no. 10.1 are listed in Table 5-1.

6 Data delivery

Geophysical logging data from the measurements, recorded in Century and Robertson format, were delivered directly after the termination of the field activities. The recorded data files used in the processing have also been delivered in WellCAD format, Table 6-1.

The delivered data have been inserted in the database (SICADA) of SKB and are traceable by the activity plan number.

The processed files shown on the drawings have been delivered in WellCAD, Table 6-2, and as excel files (one for each borehole) in SICADA format, Table 6-3.

Table 6-1. Recorded log files in Century or Robertson format used for processing.

Borehole	Probe	Log direction	WellCAD File	Description
KLX20A	8144	Up	KLX20A_05-31-06_13-38_8144C_.1_2.90_456.60_ORIG.log	Start Depth: 456.6 m End Depth: 2.9 m
KLX20A	8622	Up	KLX20A_05-31-06_15-44_8622C_.1_46.20_455.80_ORIG.log	Start Depth: 455.8 m End Depth: 46.2 m
KLX20A	9042	Down	KLX20A_05-31-06_12-06_9042C_.1_0.20_457.10_ORIG.log	Start Depth: 0.2 m End Depth: 457.1 m
KLX20A	9072	Up	KLX20A_05-31-06_14-45_9072C_.1_65.00_457.20_ORIG.log	Start Depth: 457.2 m End Depth: 65 m
KLX20A	9139	Up	KLX20A_05-31-06_19-59_9139A_.10_5.80_455.50_ORIG.log	Start Depth: 455.5 m End Depth: 5.8 m
KLX20A	9310	Up	KLX20A_05-31-06_16-25_9310C2_.10_-1.10_455.00_ORIG.log	Start Depth: 455 m End Depth: -1.1 m
KLX20A	HiRAT	Up	KLX20A_HiRAT_90pixels_up_run2.HED	Start Depth: 455 m End Depth: 100 m
KLX18A	8144	Up	KLX18A_06-01-06_16-47_8144C_.10_-0.60_612.30_ORIG.log	Start Depth: 612.3 m End Depth: -0.6 m
KLX18A	8622	Up	KLX18A_06-01-06_14-26_8622C_.10_3.10_609.30_ORIG.log	Start Depth: 3.1 m End Depth: 609.3 m
KLX18A	9042	Down	KLX18A_06-01-06_11-23_9042C_.10_9.10_612.80_ORIG.log	Start Depth: 9.1 m End Depth: 612.8 m
KLX18A	9072	Up	KLX18A_06-01-06_13-05_9072C_.10_77.00_610.50_ORIG.log	Start Depth: 610.5 m End Depth: 77 m
KLX18A	9139	Up	KLX18A_06-01-06_19-52_9139A_.10_96.90_612.60_ORIG.log	Start Depth: 612.6 m End Depth: 96.9 m
KLX18A	9310	Up	KLX18A_06-01-06_18-16_9310C2_.10_-0.40_611.10_ORIG.log	Start Depth: 611.1 m End Depth: -0.4 m
KLX18A	HiRAT	Up	KLX18A_HiRAT_90pixels_up_run2.HED	Start Depth: 607 m End Depth: 0 m
KLX11B	8144	Up	KLX11B_06-01-06_09-50_8144C_.10_-0.20_99.70_ORIG.log	Start Depth: 99.7 m End Depth: -0.2 m
KLX11B	8622	Up	KLX11B_06-01-06_08-27_8622C_.10_0.00_99.10_ORIG.log	Start Depth: 99.1 m End Depth: 0 m
KLX11B	9042	Down	KLX11B_06-01-06_08-05_9042C_.10_0.20_100.60_ORIG.log	Start Depth: 0.2 m End Depth: 100.6 m
KLX11B	9072	Up	KLX11B_06-01-06_09-05_9072C_.10_0.20_99.70_ORIG.log	Start Depth: 99.7 m End Depth: 0.2 m

Borehole	Probe	Log direction	WellCAD File	Description
KLX11B	9139	Up	KLX11B_06-01-06_10-18_9139A_10_0.00_99.80_ORIG.log	Start Depth: 99.8 m End Depth: 0 m
KLX11B	9310	Up	KLX11B_06-01-06_08-42_9310C2_10_0.10_99.00_ORIG.log	Start Depth: 99 m End Depth: 0.1 m
KLX11B	HiRAT	Up	KLX11B_HiRAT_90pixels_up_run2.HED	Start Depth: 97 m End Depth: 0 m
KLX09B	8144	Up	KLX09B_06-02-06_10-07_8144C_10_7.60_99.90_ORIG.log	Start Depth: 99.9 m End Depth: 7.6 m
KLX09B	8622	Up	KLX09B_06-02-06_08-56_8622C_10_7.80_99.60_ORIG.log	Start Depth: 99.6 m End Depth: 7.8 m
KLX09B	9042	Down	KLX09B_06-02-06_08-17_9042C_10_6.60_100.40_ORIG.log	Start Depth: 6.6 m End Depth: 100.4 m
KLX09B	9072	Up	KLX09B_06-02-06_08-38_9072C_10_2.70_99.90_ORIG.log	Start Depth: 99.9 m End Depth: 2.7 m
KLX09B	9139	Up	KLX09B_06-02-06_09-27_9139A_10_3.00_99.90_ORIG.log	Start Depth: 99.9 m End Depth: 3 m
KLX09B	9310	Up	KLX09B_06-02-06_09-08_9310C2_10_4.70_99.10_ORIG.log	Start Depth: 99.1 m End Depth: 4.7 m
KLX09D	8144	Up	KLX09D_06-02-06_12-56_8144C_10_7.60_119.40_ORIG.log	Start Depth: 119.4 m End Depth: 7.6 m
KLX09D	8622	Up	KLX09D_06-02-06_12-42_8622C_10_5.80_118.60_ORIG.log	Start Depth: 118.6 m End Depth: 5.8 m
KLX09D	9042	Down	KLX09D_06-02-06_12-21_9042C_10_7.00_120.40_ORIG.log	Start Depth: 7 m End Depth: 120.4 m
KLX09D	9072	Up	KLX09D_06-02-06_13-19_9072C_10_7.10_119.80_ORIG.log	Start Depth: 119.8 m End Depth: 7.1 m
KLX09D	9139	Up	KLX09D_06-02-06_14-28_9139A_10_3.20_120.00_ORIG.log	Start Depth: 120 m End Depth: 3.2 m
KLX09D	9310	Up	KLX09D_06-02-06_13-39_9310C2_10_3.80_118.80_ORIG.log	Start Depth: 118.8 m End Depth: 3.8 m
KLX09F	8144	Up	KLX09F_06-02-06_16-05_8144C_10_3.20_151.20_ORIG.log	Start Depth: 151.2 m End Depth: 3.2 m
KLX09F	8622	Up	KLX09F_06-02-06_16-30_8622C_10_5.00_152.30_ORIG.log	Start Depth: 152.3 m End Depth: 5 m
KLX09F	9042	Down	KLX09F_06-02-06_15-24_9042C_10_0.20_152.30_ORIG.log	Start Depth: 0.2 m End Depth: 152.3 m
KLX09F	9072	Up	KLX09F_06-02-06_16-51_9072C_10_6.10_151.40_ORIG.log	Start Depth: 151.4 m End Depth: 6.1 m
KLX09F	9139	Up	KLX09F_06-02-06_18-02_9139A_10_3.90_151.50_ORIG.log	Start Depth: 151.5 m End Depth: 3.9 m
KLX09F	9310	Up	KLX09F_06-02-06_17-23_9310C2_10_6.90_150.10_ORIG.log	Start Depth: 150.1 m End Depth: 6.9 m
HLX38	8144	Up	HLX38_07-06-06_16-40_8144C_10_0.20_199.80_ORIG.log	Start Depth: 199.8 m End Depth: 0.2 m
HLX38	8622	Up	HLX38_07-06-06_14-43_8622C_1_0.20_199.50_ORIG.log	Start Depth: 199.5 m End Depth: 0.2 m
HLX38	9042	Down	HLX38_07-06-06_09-48_9042C_1_0.20_200.10_ORIG.log	Start Depth: 0.2 m End Depth: 200.1 m
HLX38	9072	Up	HLX38_07-06-06_15-55_9072C_10_0.20_199.80_ORIG.log	Start Depth: 199.8 m End Depth: 0.2 m

Borehole	Probe	Log direction	WellCAD File	Description
HLX38	9139	Up	HLX38_07-06-06_11-02_9139A_1_123.21_198.30_ORIG.log	Start Depth: 198.3 m End Depth: 123.21 m
HLX38	9139	Up	HLX38_07-06-06_14-02_9139A_1_0.50_69.70_ORIG.log	Start Depth: 69.7 m End Depth: 0.5 m
HLX38	9310	Up	HLX38_07-06-06_15-14_9310C2_10_0.20_198.90_ORIG.log	Start Depth: 198.9 m End Depth: 0.2 m
HLX39	8144	Up	HLX39_07-05-06_19-25_8144C_10_-0.50_198.90_ORIG.log	Start Depth: -0.5 m End Depth: 198.9 m
HLX39	8622	Up	HLX39_07-05-06_19-06_8622C_10_-0.70_200.70_ORIG.log	Start Depth: 200.7 m End Depth: -0.7 m
HLX39	9042	Down	HLX39_07-05-06_16-37_9042C_10_0.20_199.00_ORIG.log	Start Depth: 0.2 m End Depth: 199 m
HLX39	9072	Up	HLX39_07-05-06_17-25_9072C_10_-0.30_199.90_ORIG.log	Start Depth: 199.9 m End Depth: -0.3 m
HLX39	9139	Up	HLX39_07-05-06_18-14_9139A_10_3.30_198.70_ORIG.log	Start Depth: 3.3 m End Depth: 198.7 m
HLX39	9310	Up	HLX39_07-05-06_20-02_9310C2_10_-0.50_199.00_ORIG.log	Start Depth: 199 m End Depth: -0.5 m
HLX40	9042	Down	HLX40_saved.log	Start Depth: 0 m End Depth: 199.5 m
HLX40	8622	Up	HLX40_07-05-06_12-19_8622C_1_-1.10_198.60_ORIG.log	Start Depth: 198.6 m End Depth: -1.1 m
HLX40	9072	Up	HLX40_07-05-06_12-46_9072C_1_-0.20_199.10_ORIG.log	Start Depth: 199.1 m End Depth: -0.2 m
HLX40	8144	Up	HLX40_07-05-06_13-24_8144C_1_-0.40_199.20_ORIG.log	Start Depth: 199.2 m End Depth: -0.4 m
HLX40	9139	Up	HLX40_07-05-06_14-16_9139A_1_0.60_199.00_ORIG.log	Start Depth: 199 m End Depth: 0.6 m
HLX40	9310	Up	HLX40_07-05-06_15-23_9310C2_10_-0.30_198.20_ORIG.log	Start Depth: 198.2 m End Depth: -0.3 m
HLX41	8144	Up	HLX41_06-03-06_10-39_8144C_10_3.60_202.90_ORIG.log	Start Depth: 202.9 m End Depth: 3.6 m
HLX41	8622	Up	HLX41_06-03-06_10-19_8622C_10_4.20_200.70_ORIG.log	Start Depth: 200.7 m End Depth: 4.2 m
HLX41	9042	Down	HLX41_06-03-06_09-33_9042C_10_0.20_202.10_ORIG.log	Start Depth: 0.2 m End Depth: 202.1 m
HLX41	9072	Up	HLX41_06-03-06_11-13_9072C_10_3.80_203.20_ORIG.log	Start Depth: 203.2 m End Depth: 3.8 m
HLX41	9139	Up	HLX41_06-03-06_14-11_9139A_10_2.30_198.90_ORIG.log	Start Depth: 198.9 m End Depth: 2.3 m
HLX41	9310	Up	HLX41_06-03-06_11-59_9310C2_10_-1.10_201.40_ORIG.log	Start Depth: 201.4 m End Depth: -1.1 m

Table 6-2. Drawing files in WellCad format.

Borehole	Drawing	WellCad file
KLX20A	1.1	KLX20A_Presentation.WCL
KLX18A	2.1	KLX18A_Presentation.WCL
KLX11B	3.1	KLX11B_Presentation.WCL
KLX09B	4.1	KLX09B_Presentation.WCL
KLX09D	5.1	KLX09D_Presentation.WCL
KLX09F	6.1	KLX09F_Presentation.WCL
HLX38	7.1	HLX38_Presentation.WCL
HLX39	8.1	HLX39_Presentation.WCL
HLX40	9.1	HLX40_Presentation.WCL
HLX41	10.1	HLX41_Presentation.WCL

Table 6-3. Data files in SICADA format.

Sheet	Comment
"Borehole"_CALIPER1_GP040 - Caliper logging.xls	
"Borehole"_CALIPER MEAN_GP041 - 3-D caliper.xls	KLX20A, KLX18A, KLX11B
"Borehole"_TEMP(FL)_RES(FL)_GP060 – Fluid temperature and resistivity logging.xls	
"Borehole"_DENSITY_GP090 – Density logging.xls	
"Borehole"_MAGSUSCEP_GP110 - Magnetic susceptibility logging.xls	
"Borehole"_GAM(NAT)_GP120 - Natural gamma logging.xls	
"Borehole"_SPR_GP150 - Single point resistance logging.xls	
"Borehole"_RES(64N)_GP160 - Resistivity, normal 1.6 m (64 in).xls	
"Borehole"_RES(MG)_GP161 - Resistivity, focused 140 cm.xls	
"Borehole"_RES(DG)_GP162 - Resistivity, focused 300 cm.xls	
"Borehole"_LATERAL_GP163 - Resistivity, lateral 1.6-0.1 m.xls	
"Borehole"_RES(16N)_GP164 - Resistivity, normal 0.4 m (16 in).xls	
"Borehole"_P-VEL_GP175 - Fullwave sonic.xls	
"Borehole"_SP_GP180 - Self potential logging.xls	

Borehole KLX20A. Drawing no. 1.1. Borehole logs


Co-ordinates in RT90 2,5 gon V 0:-15

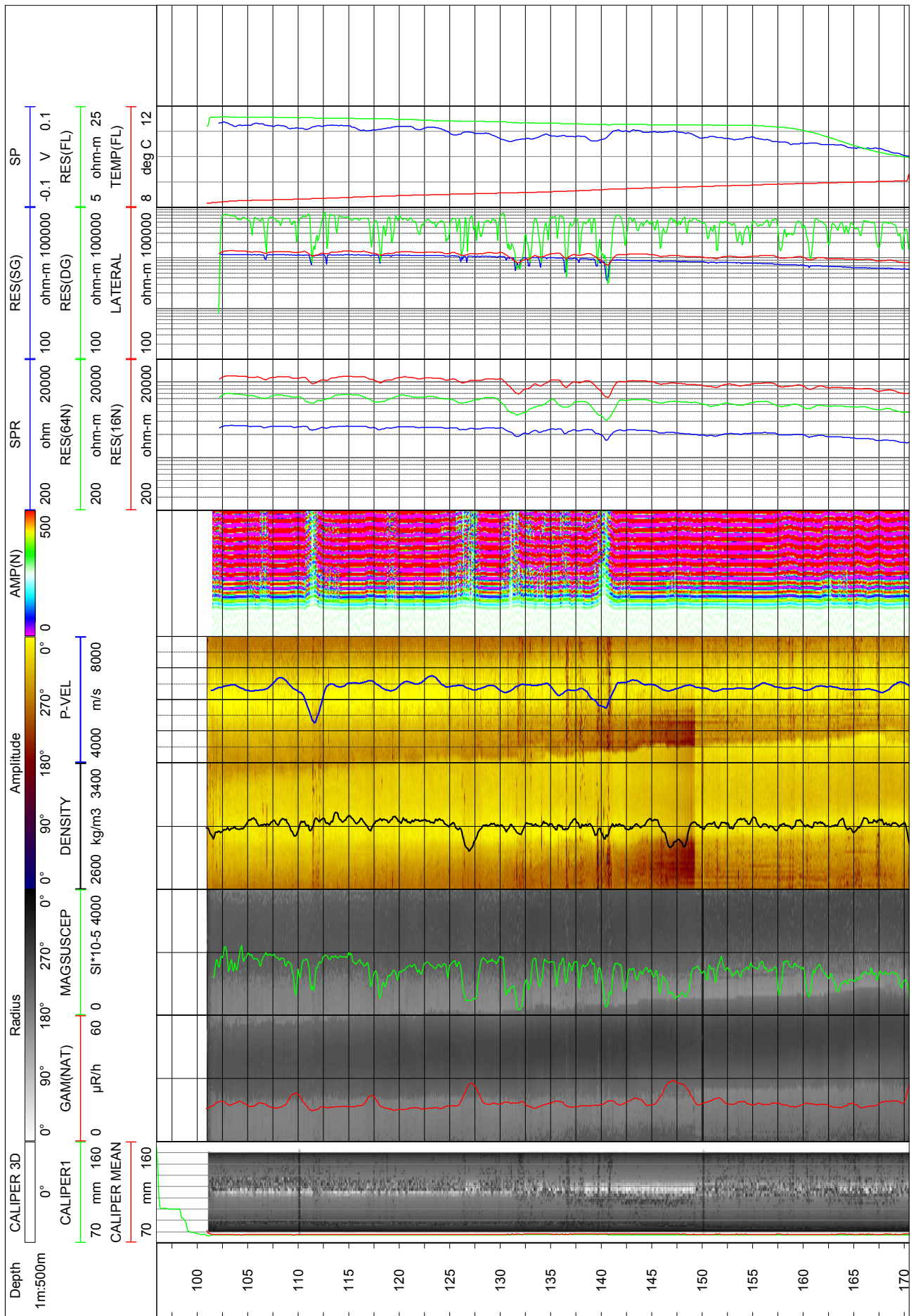
Northing: 6366334.6m Easting: 1546604.9m Elevation: 27m, RHB70

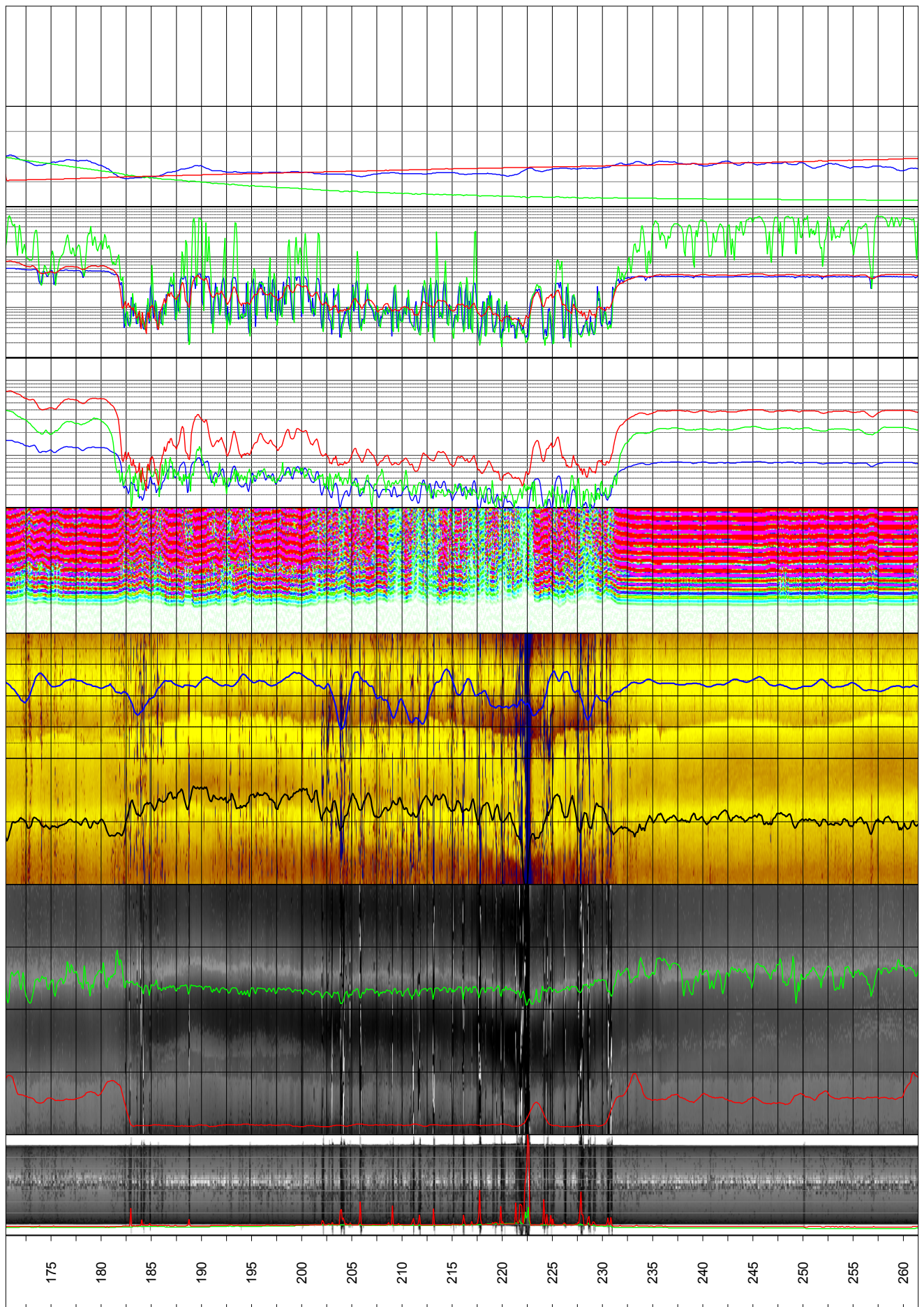
Diameter: 76mm
 Reaming Diameter: 248mm
 Outer Casing: 208mm
 Inner Casing: 200mm
 Casing Length:
 Borehole Length:
 Cone:
 Inclination at ground surface: -49.81°
 Azimuth: 270.6° GN
 Comments:

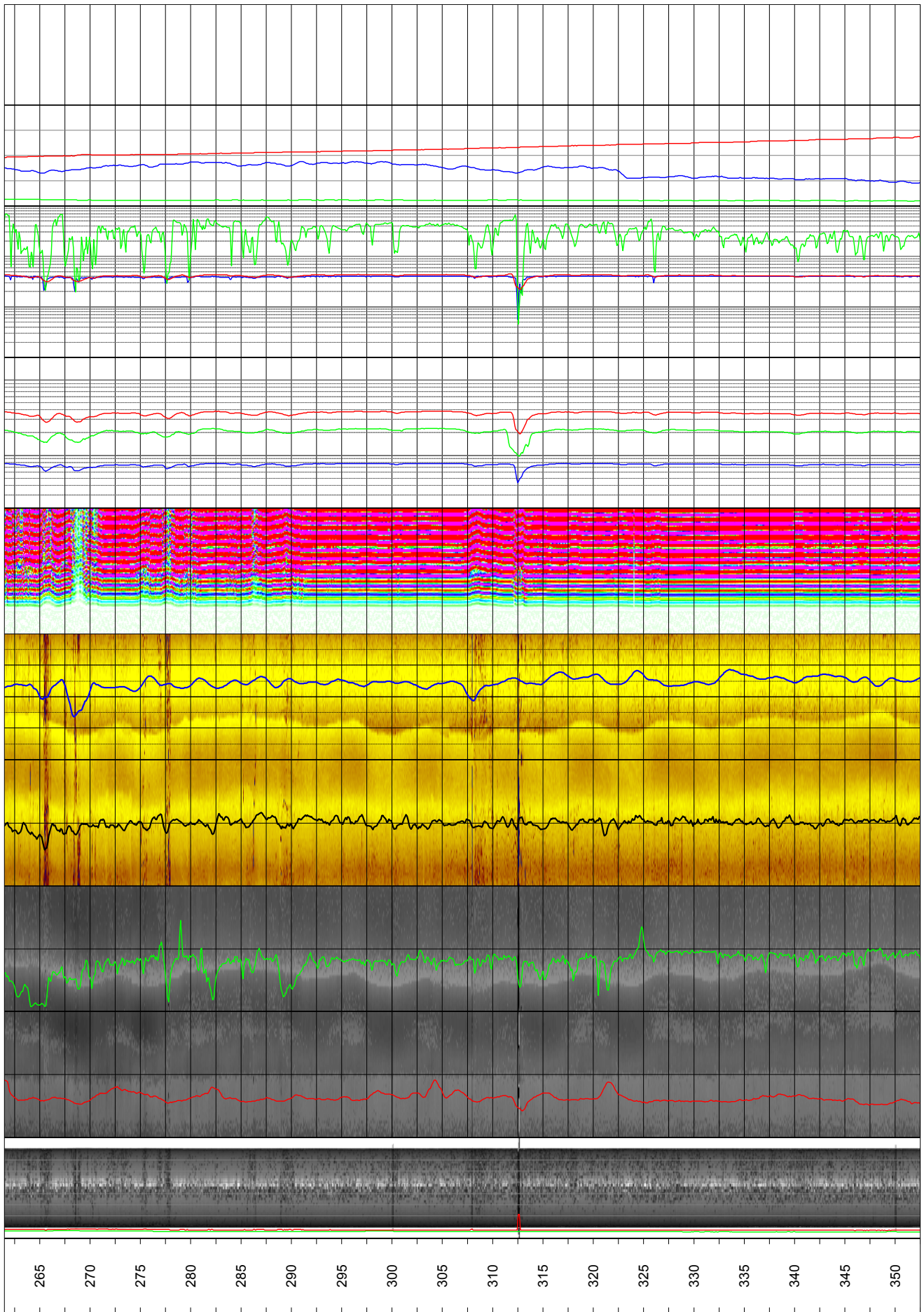
Borehole logging programme

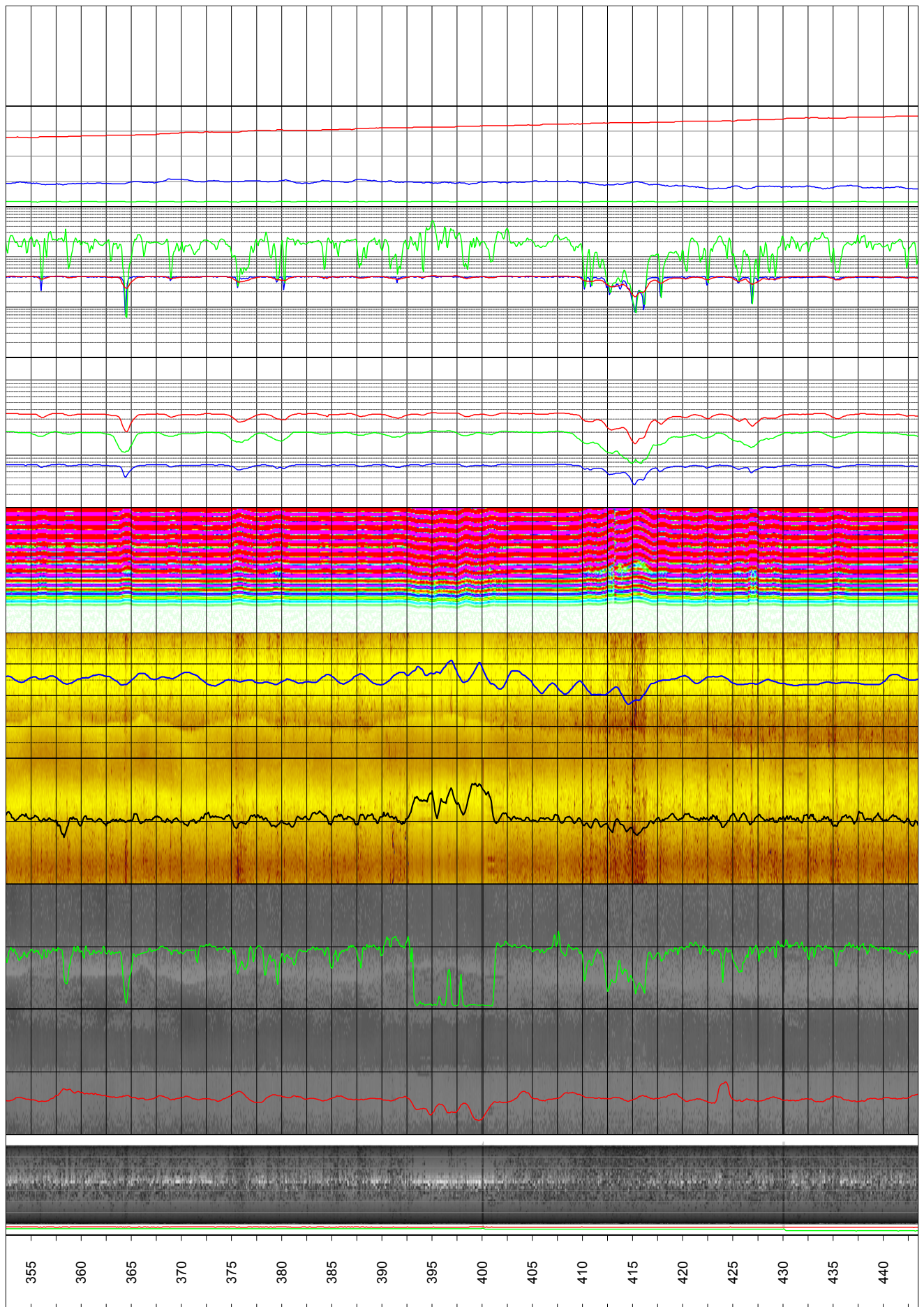
Name	Description	Tool	Unit
CALIPER1	Caliper, 1-arm	9139	mm
DENSITY	Gamma-gamma density	9139	kg/m ³
RES(SG)	Focused guard log resistivity, 128 cm	9139	ohm-m
GAM(NAT)	Natural gamma	9072	µR/h
TEMP(FL)	Fluid temperature	9042	deg C
RES(FL)	Fluid resistivity	9042	ohm-m
RES(DG)	Focused guard log resistivity, 300cm	9072	ohm-m
P-VEL	P-wave velocity	9310	m/s
AMP(N)	Full wave form, near receiver	9310	µs
AMP(F)	Full wave form, far receiver	9310	µs
MAGSUSCEP	Magnetic susceptibility	8622	SI*10-5
CALIPER 3D	Caliper, high resolution 360 degrees	HiRAT	mm
CALIPER MEAN	High resolution 1D caliper	HiRAT	mm
AZIMUTH MN	Borehole azimuth magnetic north	HiRAT	deg
DIP	Borehole inclination from horizontal	HiRAT	deg
RADIUS	360 degrees orientated acoustic radius	HiRAT	mm
AMPLITUDE	360 degrees orientated acoustic amplitude	HiRAT	-
THORIUM	Spectral gamma, Thorium component	9080	PPM
URANIUM	Spectral gamma, Uranium component	9080	PPM
POTASSIUM	Spectral gamma, Potassium component	9080	percent
RES(16N)	Normal resistivity 16 inch	8144	ohm-m
RES(64N)	Normal resistivity 64 inch	8144	ohm-m
LATERAL	Lateral resistivity	8144	ohm-m
SPR	Single point resistivity	8144	ohm
SP	Self Potential	8144	V

Rev. 0	Date 2006-10-10	Drawn by JRI	Control GA	Approved UTN	 <small>Rambøll, Brededevej 2, DK-2830 Virum Phone + 45 45 98 60 00, Fax + 45 45 98 67 00</small>
Job 547310A	Scale 1:500				
<hr/> SKB geophysical borehole logging Borehole KLX20A <hr/> Presentation					Filename: KLX20A_Presentation.wcl Drawing no.: 1.1









Borehole KLX18A. Drawing no. 2.1. Borehole logs


Co-ordinates in RT90 2,5 gon V 0:-15

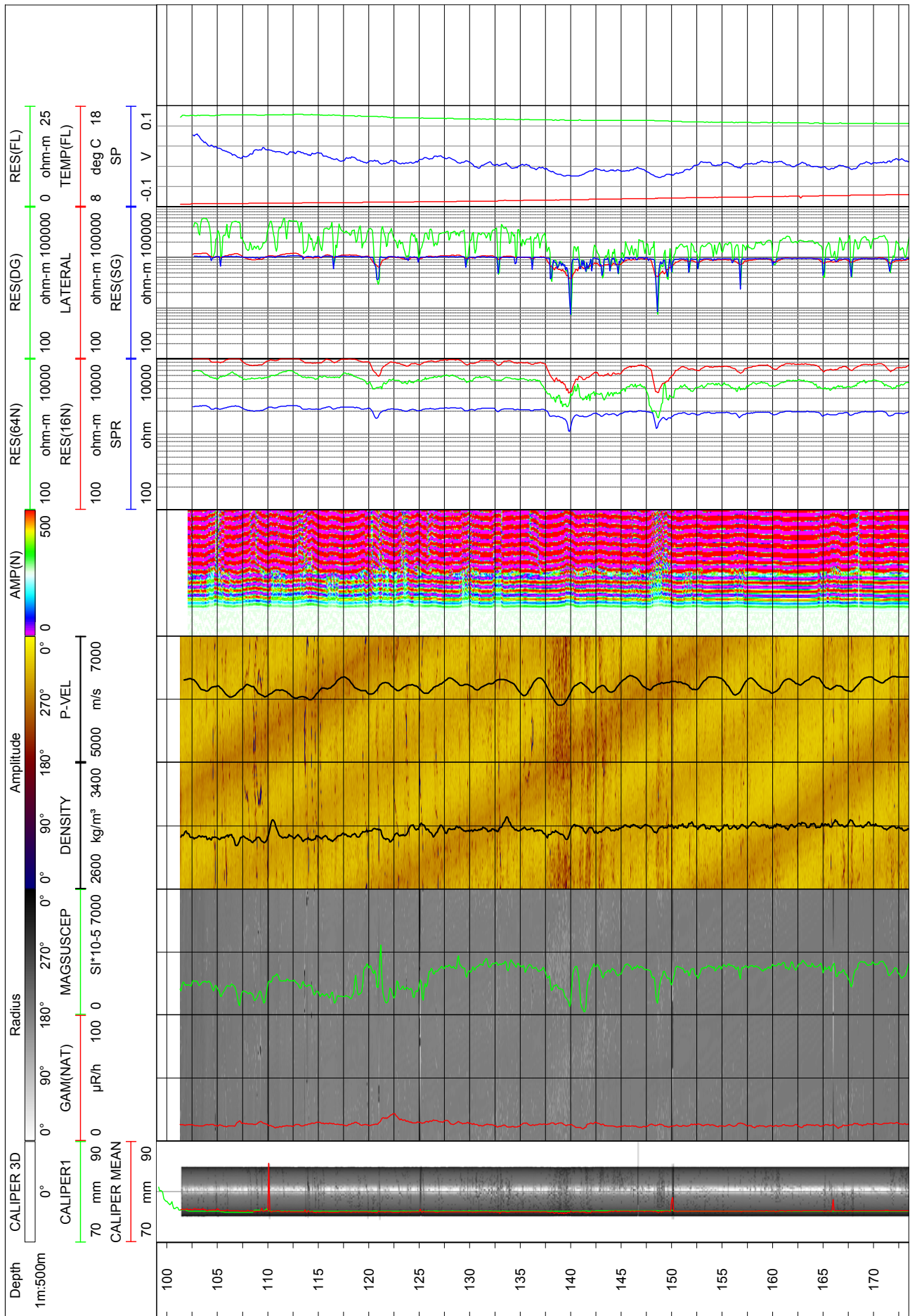
Northing: 6366413.4m Easting: 1547966.3m Elevation: 21m, RHB70

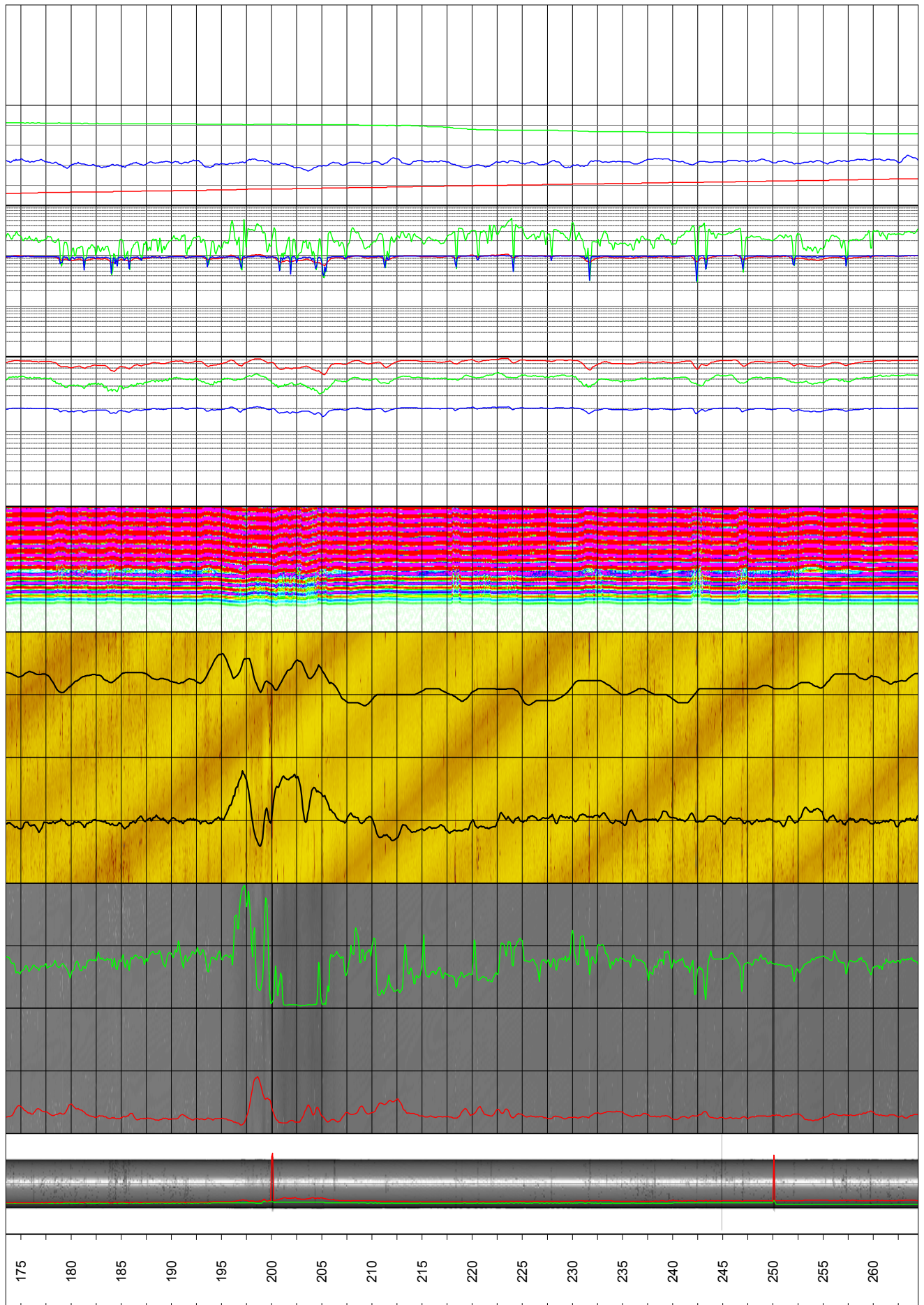
Diameter: 76mm
 Reaming Diameter: 248mm
 Outer Casing: 208mm
 Inner Casing: 200mm
 Casing Length:
 Borehole Length:
 Cone:
 Inclination at ground surface: -82.04°
 Azimuth: 271.4° GN
 Comments:

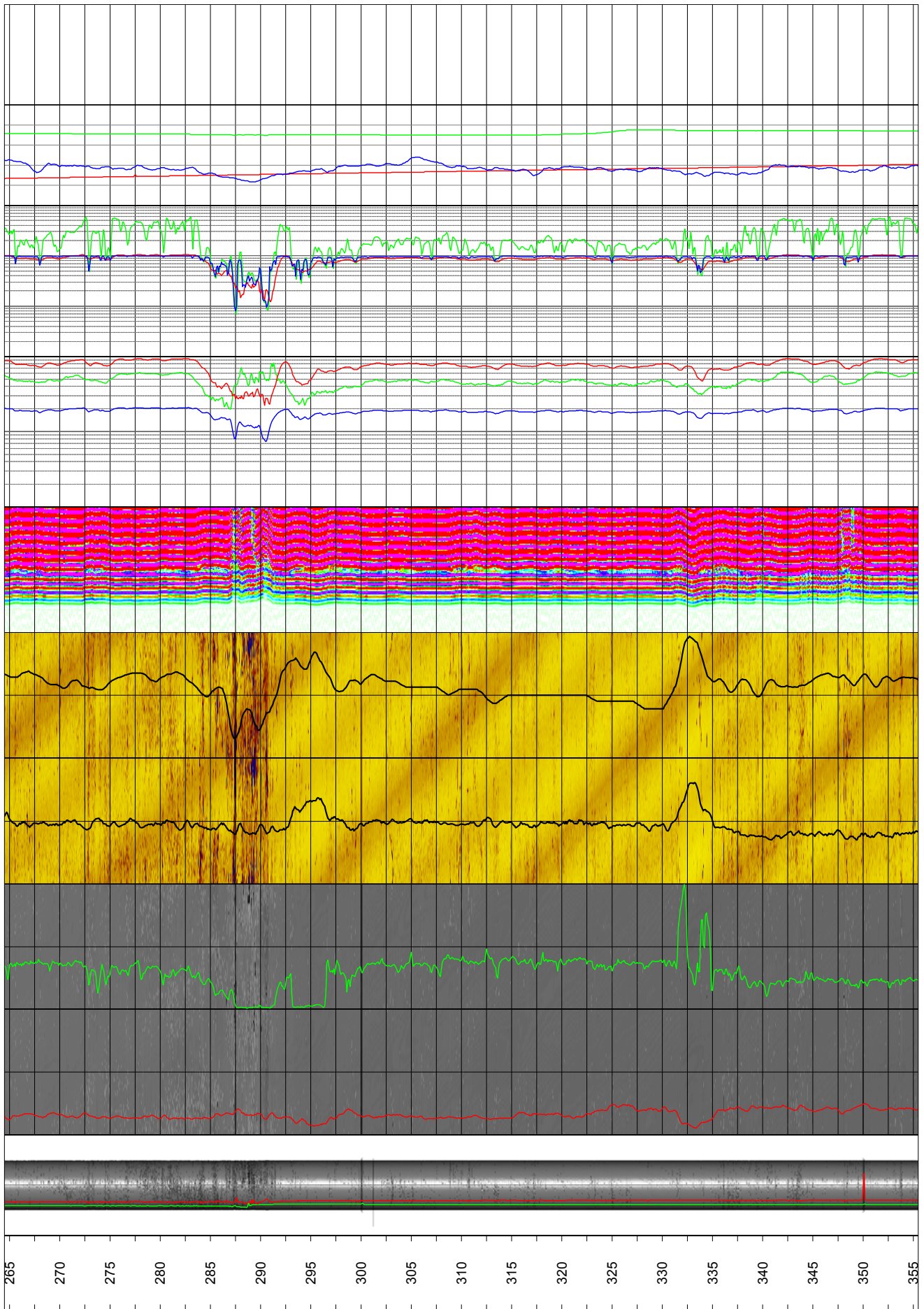
Borehole logging programme

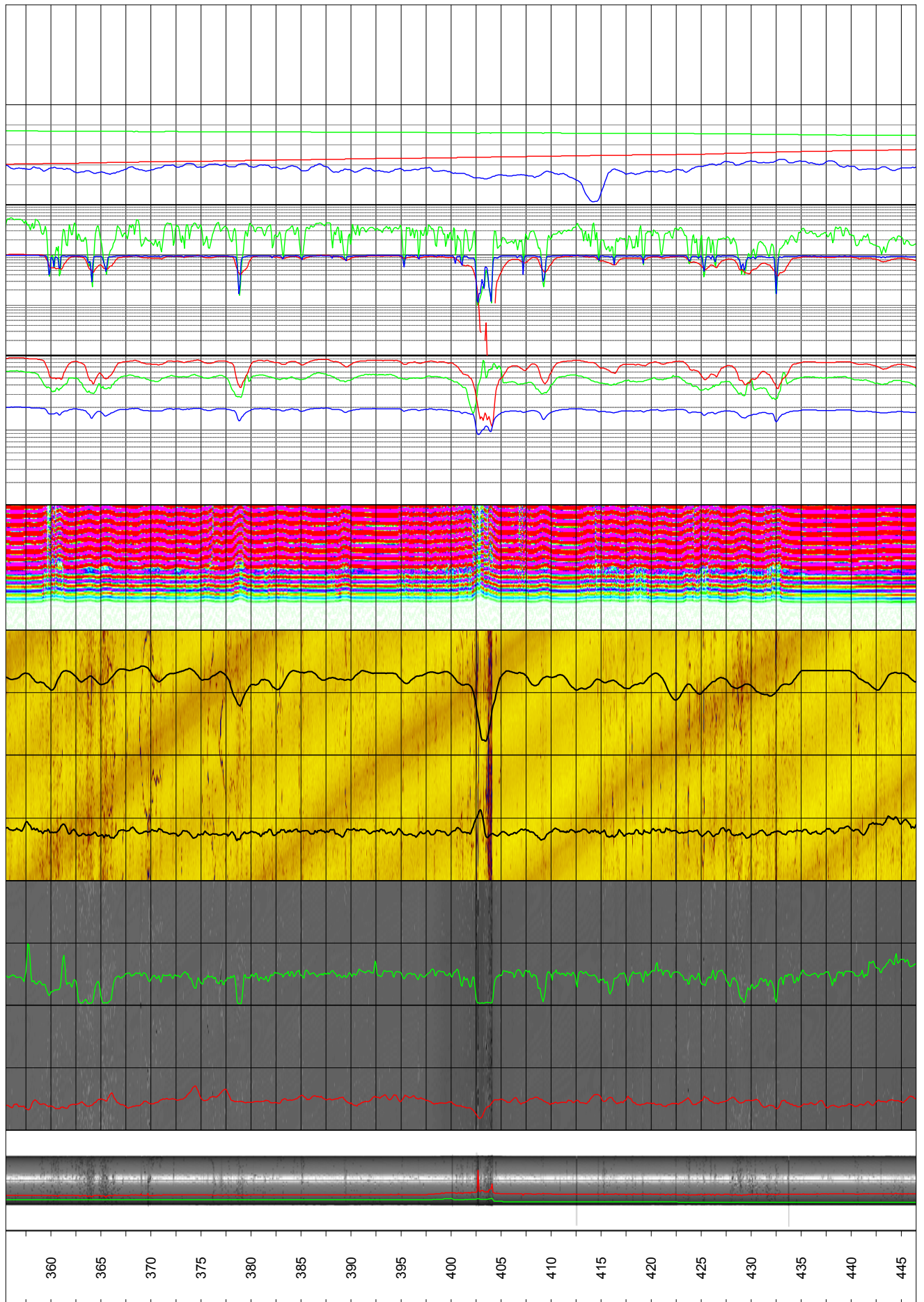
Name	Description	Tool	Unit
CALIPER1	Caliper, 1-arm	9139	mm
DENSITY	Gamma-gamma density	9139	kg/m ³
RES(SG)	Focused guard log resistivity, 128 cm	9139	ohm-m
GAM(NAT)	Natural gamma	9072	µR/h
TEMP(FL)	Fluid temperature	9042	deg C
RES(FL)	Fluid resistivity	9042	ohm-m
RES(DG)	Focused guard log resistivity, 300cm	9072	ohm-m
P-VEL	P-wave velocity	9310	m/s
AMP(N)	Full wave form, near receiver	9310	µs
AMP(F)	Full wave form, far receiver	9310	µs
MAGSUSCEP	Magnetic susceptibility	8622	SI*10-5
CALIPER 3D	Caliper, high resolution 360 degrees	HiRAT	mm
CALIPER MEAN	High resolution 1D caliper	HiRAT	mm
AZIMUTH MN	Borehole azimuth magnetic north	HiRAT	deg
DIP	Borehole inclination from horizontal	HiRAT	deg
RADIUS	360 degrees orientated acoustic radius	HiRAT	mm
AMPLITUDE	360 degrees orientated acoustic amplitude	HiRAT	-
THORIUM	Spectral gamma, Thorium component	9080	PPM
URANIUM	Spectral gamma, Uranium component	9080	PPM
POTASSIUM	Spectral gamma, Potassium component	9080	percent
RES(16N)	Normal resistivity 16 inch	8144	ohm-m
RES(64N)	Normal resistivity 64 inch	8144	ohm-m
LATERAL	Lateral resistivity	8144	ohm-m
SPR	Single point resistivity	8144	ohm
SP	Self Potential	8144	V

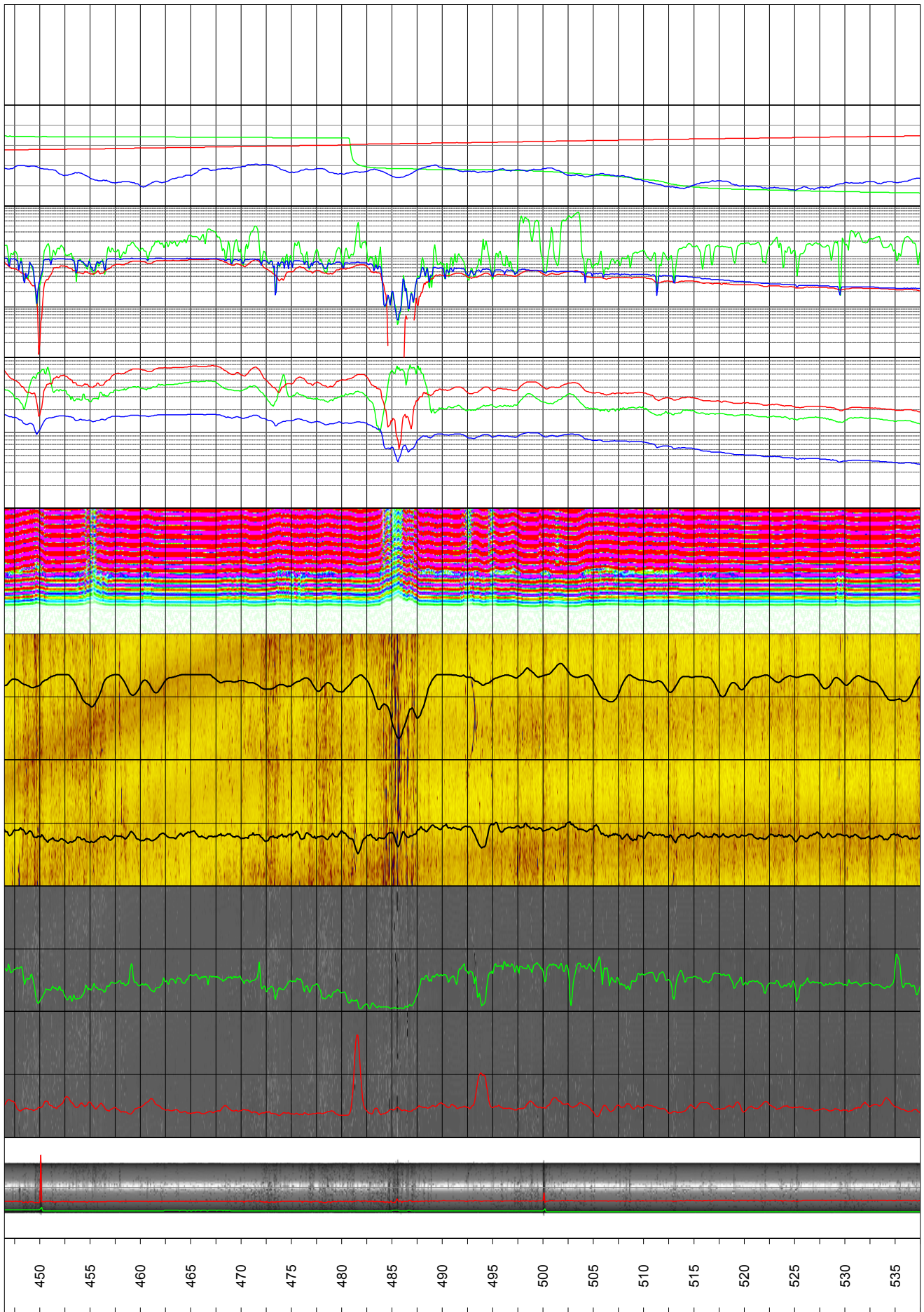
Rev. 0	Date 2006-06-02	Drawn by JRI	Control UTN	Approved UTN	 <small>Ramboll, Bredevej 2, DK-2830 Virum Phone + 45 45 98 60 00, Fax + 45 45 98 67 00</small>
Job 547310A	Scale 1:500				
<hr/> <h2>SKB geophysical borehole logging</h2> <h3>Borehole KLX18A</h3> <hr/> <p>Presentation</p>					Filename: KLX18A_Presentation.wcl Drawing no.: 2.1

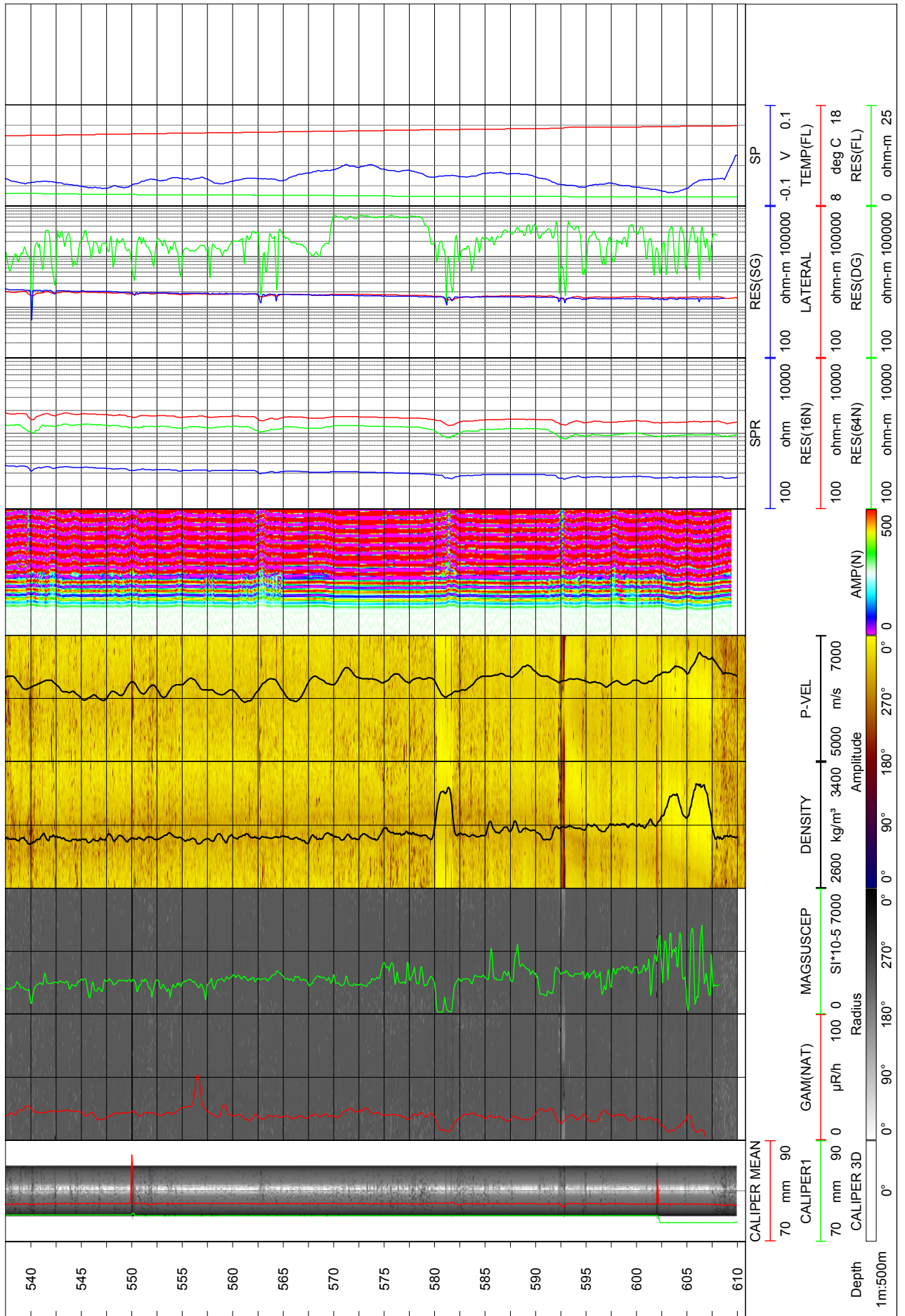












Borehole KLX11B. Drawing no. 3.1. Borehole logs


Co-ordinates in RT90 2,5 gon V 0:-15

Northing: 6366339.5m Easting: 1546604.9m Elevation: ?

Diameter: 76mm
 Reaming Diameter: 117mm
 Outer Casing:
 Inner Casing: 77mm
 Casing Length: 1.21m
 Borehole Length: 100.20m
 Cone:
 Inclination at ground surface: -89.9°
 Azimuth: 136.16°
 Comments:

Borehole logging programme

Name	Description	Tool	Unit
CALIPER1	Caliper, 1-arm	9139	mm
DENSITY	Gamma-gamma density	9139	kg/m ³
RES(SG)	Focused guard log resistivity, 128 cm	9139	ohm-m
GAM(NAT)	Natural gamma	9072	µR/h
TEMP(FL)	Fluid temperature	9042	deg C
RES(FL)	Fluid resistivity	9042	ohm-m
RES(DG)	Focused guard log resistivity, 300cm	9072	ohm-m
P-VEL	P-wave velocity	9310	m/s
AMP(N)	Full wave form, near receiver	9310	µs
AMP(F)	Full wave form, far receiver	9310	µs
MAGSUSCEP	Magnetic susceptibility	8622	SI*10-5
CALIPER 3D	Caliper, high resolution 360 degrees	HiRAT	mm
CALIPER MEAN	High resolution 1D caliper	HiRAT	mm
AZIMUTH MN	Borehole azimuth magnetic north	HiRAT	deg
DIP	Borehole inclination from horizontal	HiRAT	deg
RADIUS	360 degrees orientated acoustic radius	HiRAT	mm
AMPLITUDE	360 degrees orientated acoustic amplitude	HiRAT	-
THORIUM	Spectral gamma, Thorium component	9080	PPM
URANIUM	Spectral gamma, Uranium component	9080	PPM
POTASSIUM	Spectral gamma, Potassium component	9080	percent
RES(16N)	Normal resistivity 16 inch	8144	ohm-m
RES(64N)	Normal resistivity 64 inch	8144	ohm-m
LATERAL	Lateral resistivity	8144	ohm-m
SPR	Single point resistivity	8144	ohm
SP	Self Potential	8144	V

Rev. 0	Date 2006-07-27	Drawn by JRI	Control JRI	Approved UTN	 <small>Rambøll, Bredevej 2, DK-2830 Virum Phone + 45 45 98 60 00, Fax + 45 45 98 67 00</small>
Job 547310A	Scale 1:500				
<h2>SKB geophysical borehole logging</h2> <h3>Borehole KLX11B</h3>					
Presentation					Filename: KLX11B_presentation.wcl Drawing no.: 3.1

Borehole KLX09B. Drawing no. 4.1. Borehole logs


Co-ordinates in RT90 2,5 gon V 0:-15

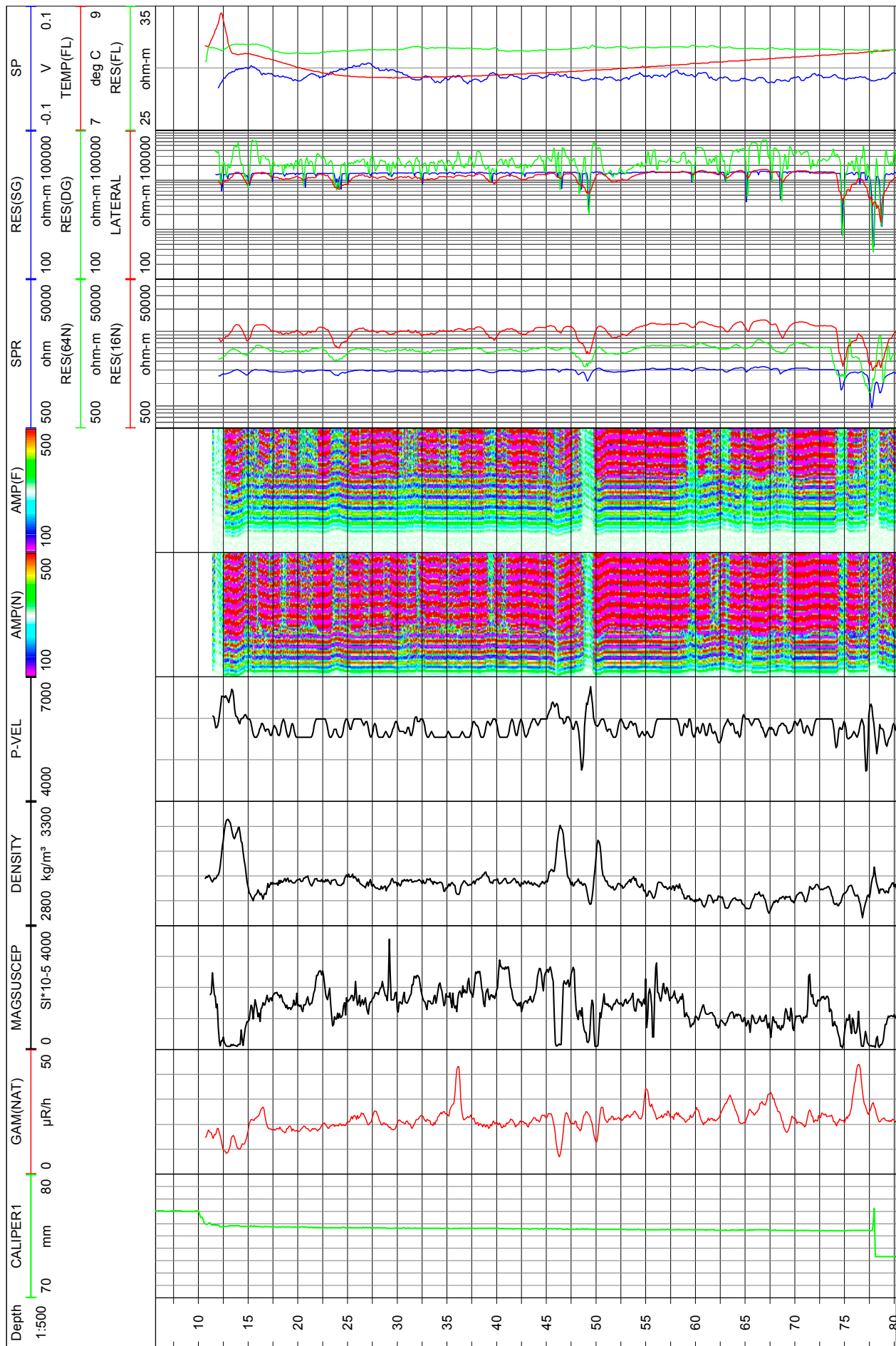
Northing: 6367329.1m Easting: 1548859.0m Elevation:

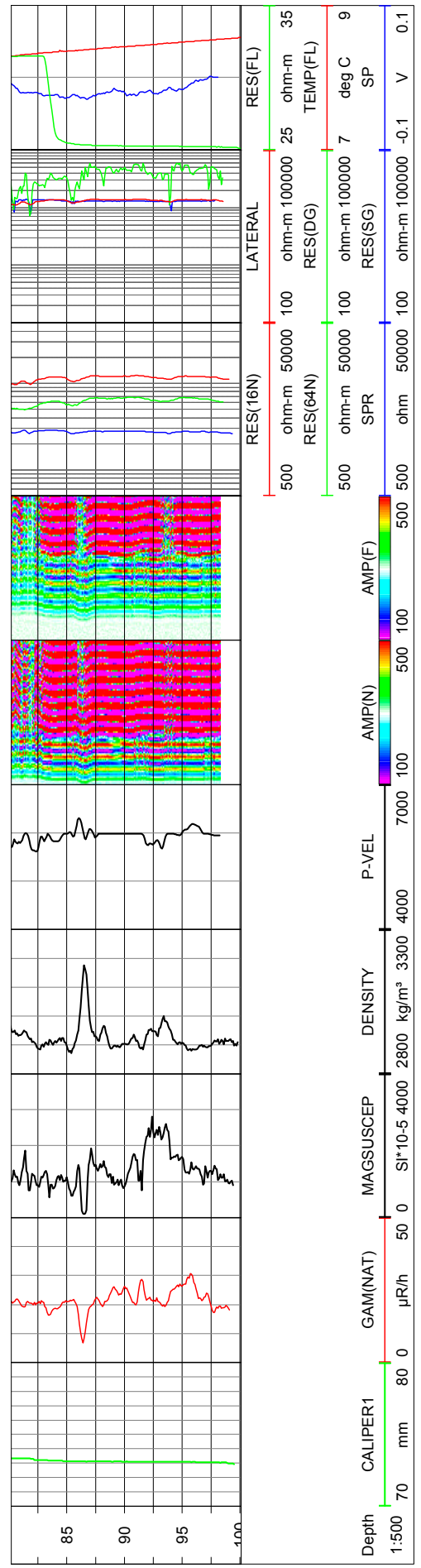
Diameter: 76mm
 Reaming Diameter: 96mm
 Outer Casing: 89mm
 Inner Casing: 77mm
 Casing Length: 10.74m
 Borehole Length: 100.22m
 Cone:
 Inclination at ground surface: -89.54°
 Azimuth: 21,25° GN
 Comments:

Borehole logging programme

Name	Description	Tool	Unit
CALIPER1	Caliper, 1-arm	9139	mm
DENSITY	Gamma-gamma density	9139	kg/m³
RES(SG)	Focused guard log resistivity, 128 cm	9139	ohm-m
GAM(NAT)	Natural gamma	9072	µR/h
TEMP(FL)	Fluid temperature	9042	deg C
RES(FL)	Fluid resistivity	9042	ohm-m
RES(DG)	Focused guard log resistivity, 300cm	9072	ohm-m
P-VEL	P-wave velocity	9310	m/s
AMP(N)	Full wave form, near receiver	9310	µs
AMP(F)	Full wave form, far receiver	9310	µs
MAGSUSCEP	Magnetic susceptibility	8622	SI*10-5
CALIPER 3D	Caliper, high resolution 360 degrees	HiRAT	mm
CALIPER MEAN	High resolution 1D caliper	HiRAT	mm
AZIMUTH MN	Borehole azimuth magnetic north	HiRAT	deg
DIP	Borehole inclination from horizontal	HiRAT	deg
RADIUS	360 degrees orientated acoustic radius	HiRAT	mm
AMPLITUDE	360 degrees orientated acoustic amplitude	HiRAT	-
THORIUM	Spectral gamma, Thorium component	9080	PPM
URANIUM	Spectral gamma, Uranium component	9080	PPM
POTASSIUM	Spectral gamma, Potassium component	9080	percent
RES(16N)	Normal resistivity 16 inch	8144	ohm-m
RES(64N)	Normal resistivity 64 inch	8144	ohm-m
LATERAL	Lateral resistivity	8144	ohm-m
SPR	Single point resistivity	8144	ohm
SP	Self Potential	8144	V

Rev. 0	Date 2006-07-19	Drawn by JRI	Control UTN	Approved UTN	 <p>Ramboll. Bredevej 2, DK-2830 Virum Phone + 45 45 98 60 00, Fax + 45 45 98 67 00</p>
Job 547310A	Scale 1:500				
<p>SKB geophysical borehole logging Borehole KLX09B</p>					Filename: KLX09B_Presentation.wcl
<p>Presentation</p>					Drawing no.: 4.1





Borehole KLX09D. Drawing no. 5.1. Borehole logs


Co-ordinates in RT90 2,5 gon V 0:-15

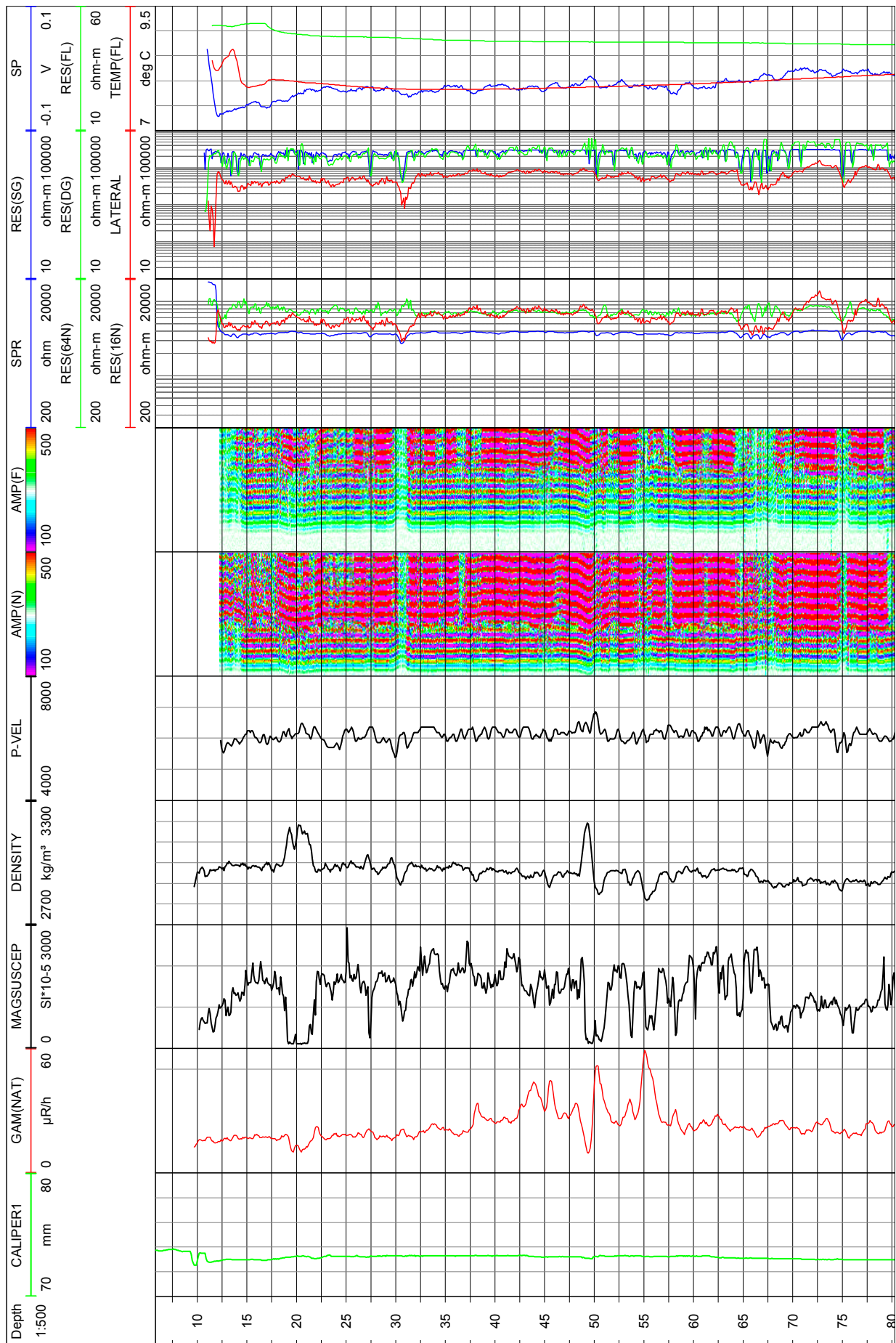
Northing: 6367336.99m Easting: 1548878.22m Elevation:

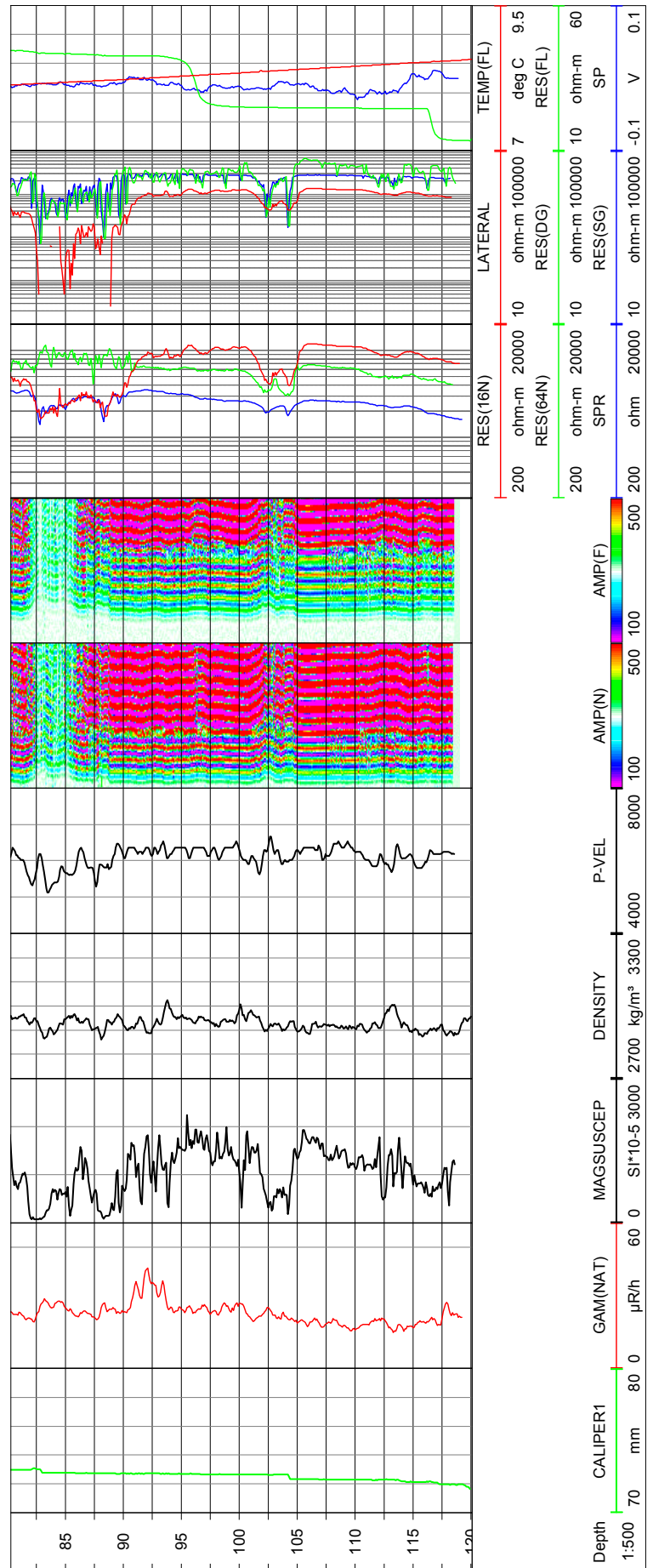
Diameter: 76mm
 Reaming Diameter: 96mm
 Outer Casing: 89mm
 Inner Casing: 77mm
 Casing Length: 9.75
 Borehole Length: 121.02m
 Cone:
 Inclination at ground surface: -59.62°
 Azimuth: 270.15° GN
 Comments:

Borehole logging programme

Name	Description	Tool	Unit
CALIPER1	Caliper, 1-arm	9139	mm
DENSITY	Gamma-gamma density	9139	kg/m ³
RES(SG)	Focused guard log resistivity, 128 cm	9139	ohm-m
GAM(NAT)	Natural gamma	9072	µR/h
TEMP(FL)	Fluid temperature	9042	deg C
RES(FL)	Fluid resistivity	9042	ohm-m
RES(DG)	Focused guard log resistivity, 300cm	9072	ohm-m
P-VEL	P-wave velocity	9310	m/s
AMP(N)	Full wave form, near receiver	9310	µs
AMP(F)	Full wave form, far receiver	9310	µs
MAGSUSCEP	Magnetic susceptibility	8622	SI*10 ⁻⁵
CALIPER 3D	Caliper, high resolution 360 degrees	HiRAT	mm
CALIPER MEAN	High resolution 1D caliper	HiRAT	mm
AZIMUTH MN	Borehole azimuth magnetic north	HiRAT	deg
DIP	Borehole inclination from horizontal	HiRAT	deg
RADIUS	360 degrees orientated acoustic radius	HiRAT	mm
AMPLITUDE	360 degrees orientated acoustic amplitude	HiRAT	-
THORIUM	Spectral gamma, Thorium component	9080	PPM
URANIUM	Spectral gamma, Uranium component	9080	PPM
POTASSIUM	Spectral gamma, Potassium component	9080	percent
RES(16N)	Normal resistivity 16 inch	8144	ohm-m
RES(64N)	Normal resistivity 64 inch	8144	ohm-m
LATERAL	Lateral resistivity	8144	ohm-m
SPR	Single point resistivity	8144	ohm
SP	Self Potential	8144	V

Rev. 0	Date 2006-07-19	Drawn by JRI	Control UTN	Approved UTN	 <p>Ramboll, Bredevej 2, DK-2830 Virum Phone + 45 45 98 60 00, Fax + 45 45 98 67 00</p>
Job 547310A	Scale 1:500				
<hr/> <h2>SKB geophysical borehole logging</h2> <h3>Borehole KLX09D</h3> <hr/> <p>Presentation</p>					Filename: KLX09D_Presentation.wcl Drawing no.: 5.1





Borehole KLX09F. Drawing no. 6.1. Borehole logs


Co-ordinates in RT90 2,5 gon V 0:-15

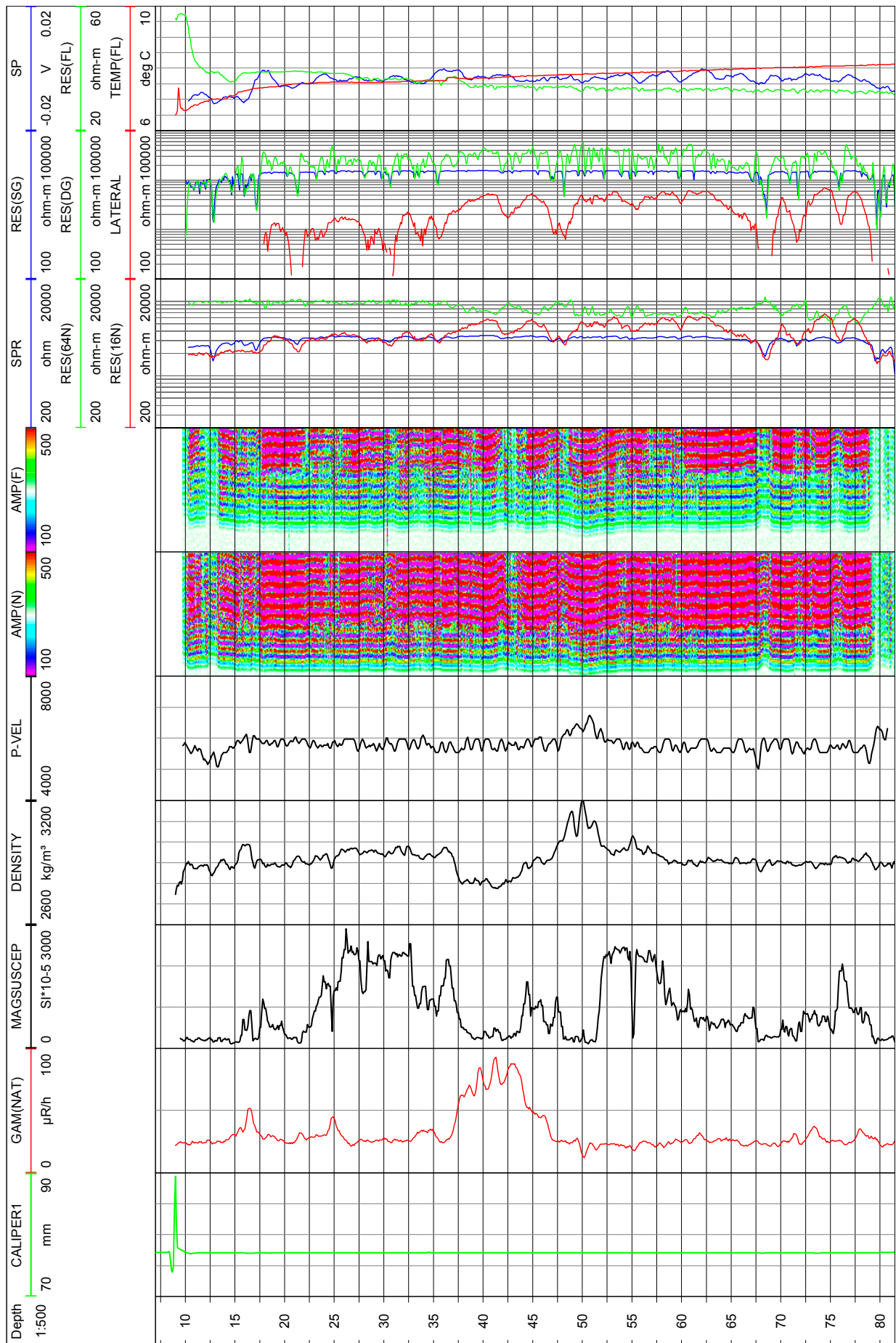
Northing: 6367318.0m Easting: 1548817.26m Elevation:

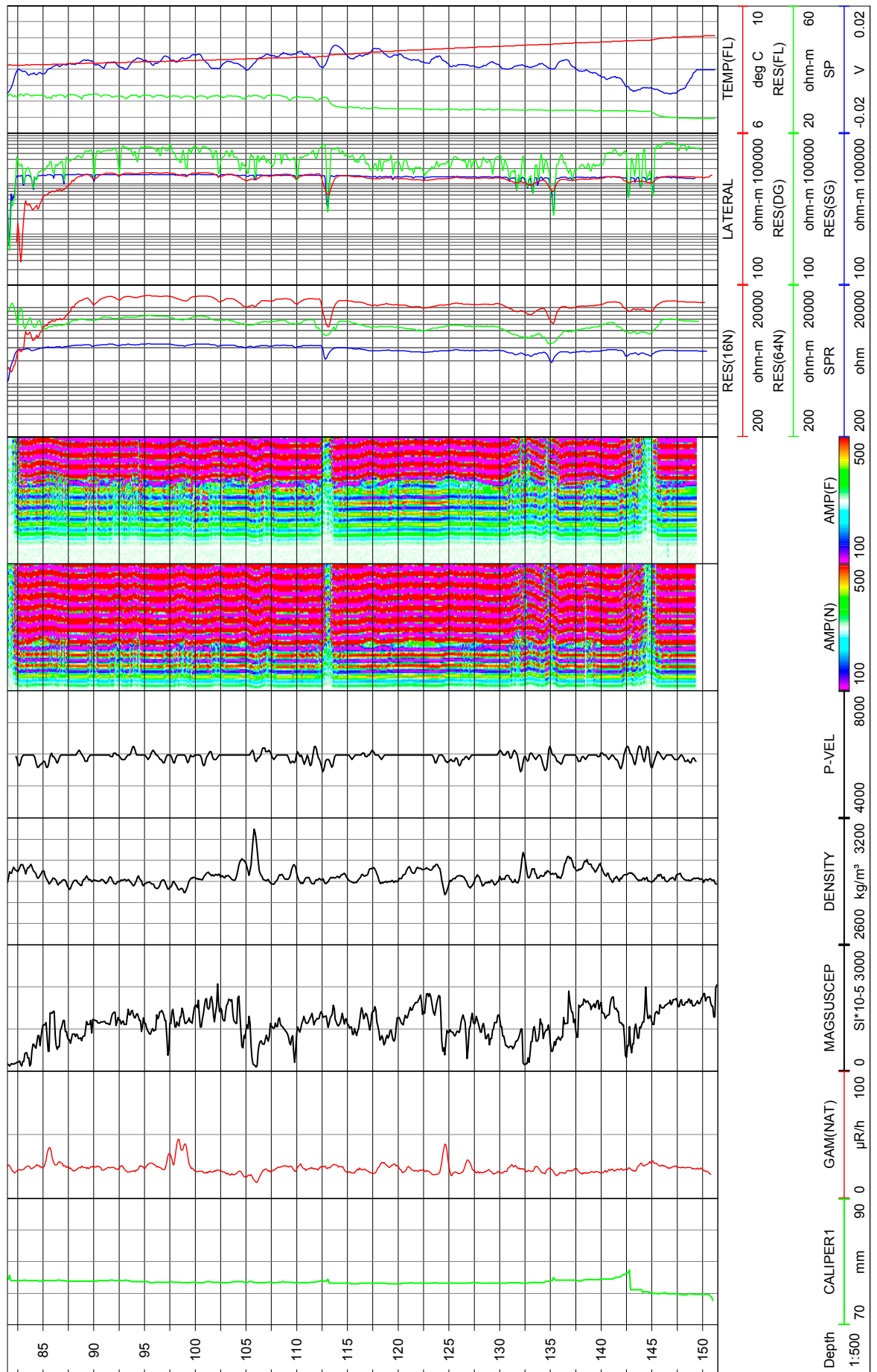
Diameter: 76mm
 Reaming Diameter: 96mm
 Outer Casing: 89mm
 Inner Casing: 77mm
 Casing Length: 9.0m
 Borehole Length: 152.3m
 Cone:
 Inclination at ground surface: -59.14°
 Azimuth: 90.67° GN
 Comments:

Borehole logging programme

Name	Description	Tool	Unit
CALIPER1	Caliper, 1-arm	9139	mm
DENSITY	Gamma-gamma density	9139	kg/m ³
RES(SG)	Focused guard log resistivity, 128 cm	9139	ohm-m
GAM(NAT)	Natural gamma	9072	µR/h
TEMP(FL)	Fluid temperature	9042	deg C
RES(FL)	Fluid resistivity	9042	ohm-m
RES(DG)	Focused guard log resistivity, 300cm	9072	ohm-m
P-VEL	P-wave velocity	9310	m/s
AMP(N)	Full wave form, near receiver	9310	µs
AMP(F)	Full wave form, far receiver	9310	µs
MAGSUSCEP	Magnetic susceptibility	8622	SI*10-5
CALIPER 3D	Caliper, high resolution 360 degrees	HiRAT	mm
CALIPER MEAN	High resolution 1D caliper	HiRAT	mm
AZIMUTH MN	Borehole azimuth magnetic north	HiRAT	deg
DIP	Borehole inclination from horizontal	HiRAT	deg
RADIUS	360 degrees orientated acoustic radius	HiRAT	mm
AMPLITUDE	360 degrees orientated acoustic amplitude	HiRAT	-
THORIUM	Spectral gamma, Thorium component	9080	PPM
URANIUM	Spectral gamma, Uranium component	9080	PPM
POTASSIUM	Spectral gamma, Potassium component	9080	percent
RES(16N)	Normal resistivity 16 inch	8144	ohm-m
RES(64N)	Normal resistivity 64 inch	8144	ohm-m
LATERAL	Lateral resistivity	8144	ohm-m
SPR	Single point resistivity	8144	ohm
SP	Self Potential	8144	V

Rev. 0	Date 2006-07-19	Drawn by JRI	Control UTN	Approved UTN	 <small>Rambøll, Bredevej 2, DK-2830 Virum Phone + 45 45 98 60 00, Fax + 45 45 98 67 00</small>
Job 547310A	Scale 1:500				
<hr/> SKB geophysical borehole logging Borehole KLX09F					Filename: KLX09F_Presentation.wcl
<hr/> Presentation					Drawing no.: 6.1





Borehole HLX38. Drawing no. 7.1. Borehole logs


Co-ordinates in RT90 2,5 gon V 0:-15

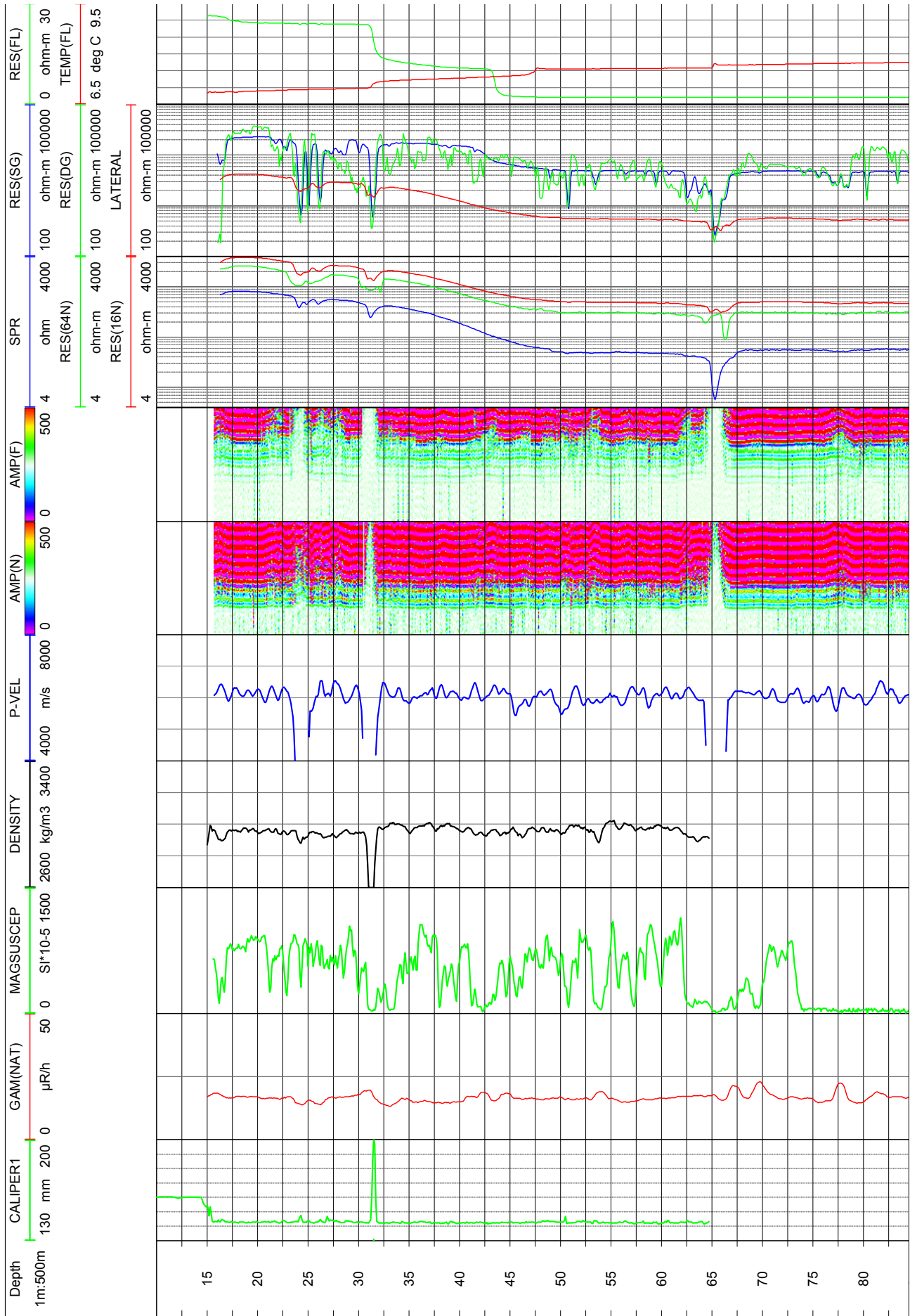
Northing: 6365868.861m Easting: 1547146.084m Elevation: 11.53m, RHB70

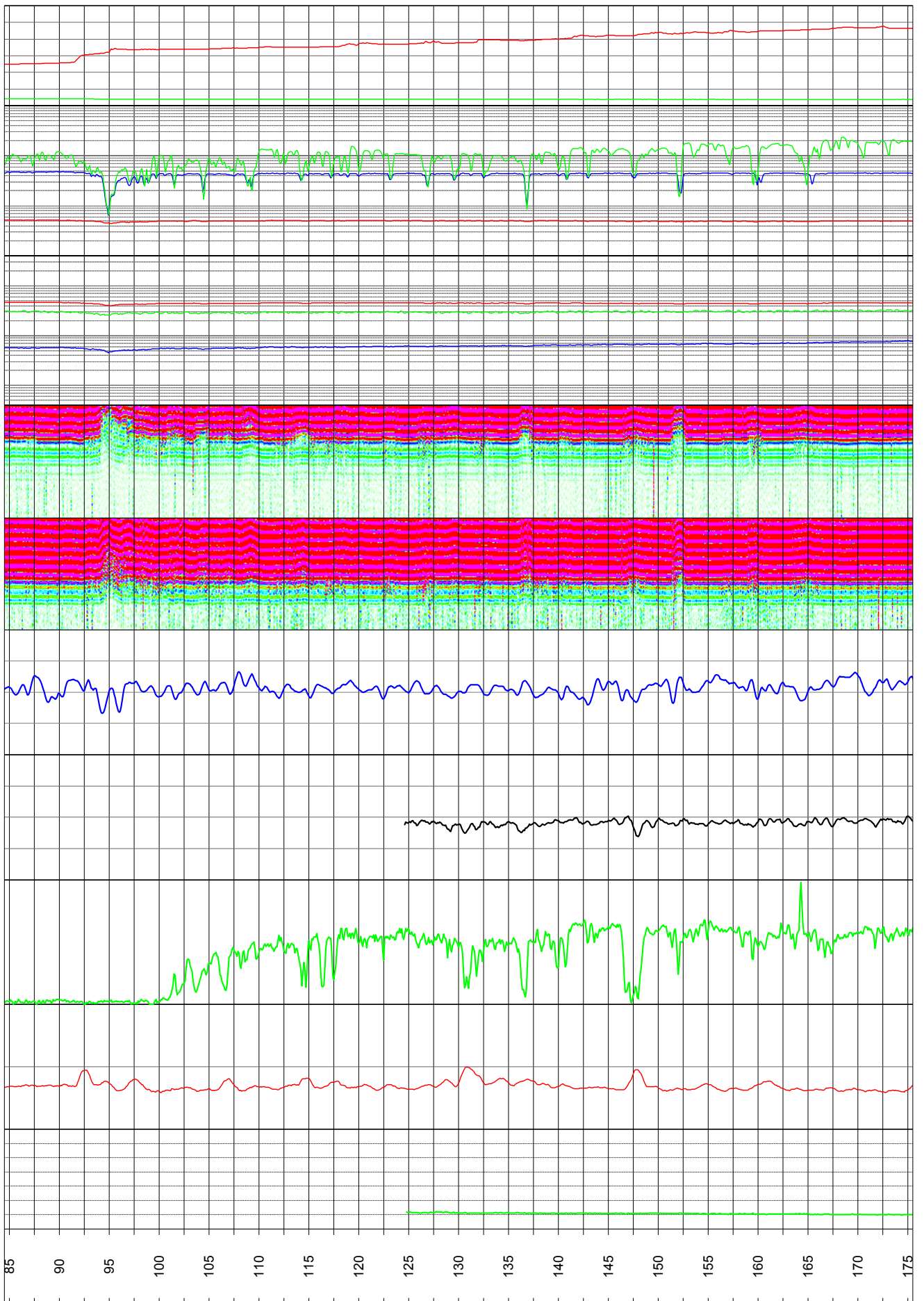
Diameter: 139-140mm
 Reaming Diameter: -
 Outer Casing: 168mm
 Inner Casing: 160mm
 Casing Length: 15.02m
 Borehole Length: 199.5m
 Cone:
 Inclination at ground surface: -59.39°
 Azimuth: 110.043° GN
 Comments:

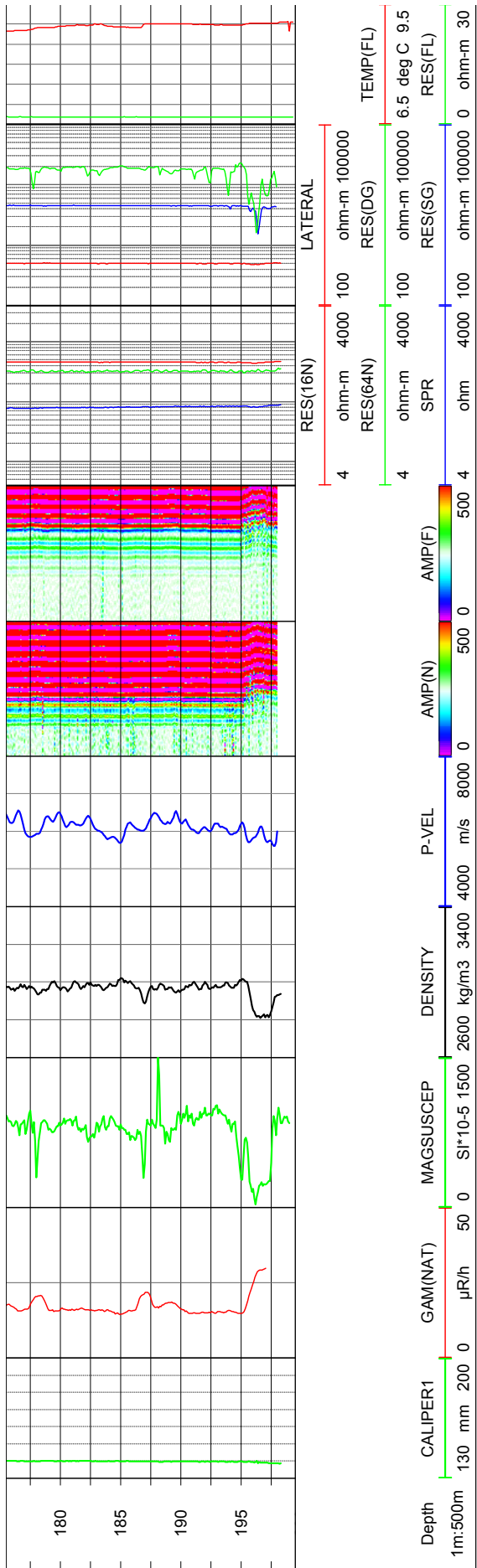
Borehole logging programme

Name	Description	Tool	Unit
CALIPER1	Caliper, 1-arm	9139	mm
DENSITY	Gamma-gamma density	9139	kg/m ³
RES(SG)	Focused guard log resistivity, 128 cm	9139	ohm-m
GAM(NAT)	Natural gamma	9072	µR/h
TEMP(FL)	Fluid temperature	9042	deg C
RES(FL)	Fluid resistivity	9042	ohm-m
RES(DG)	Focused guard log resistivity, 300cm	9072	ohm-m
P-VEL	P-wave velocity	9310	m/s
AMP(N)	Full wave form, near receiver	9310	µs
AMP(F)	Full wave form, far receiver	9310	µs
MAGSUSCEP	Magnetic susceptibility	8622	SI*10-5
CALIPER 3D	Caliper, high resolution 360 degrees	HiRAT	mm
CALIPER MEAN	High resolution 1D caliper	HiRAT	mm
AZIMUTH MN	Borehole azimuth magnetic north	HiRAT	deg
DIP	Borehole inclination from horizontal	HiRAT	deg
RADIUS	360 degrees orientated acoustic radius	HiRAT	mm
AMPLITUDE	360 degrees orientated acoustic amplitude	HiRAT	-
THORIUM	Spectral gamma, Thorium component	9080	PPM
URANIUM	Spectral gamma, Uranium component	9080	PPM
POTASSIUM	Spectral gamma, Potassium component	9080	percent
RES(16N)	Normal resistivity 16 inch	8144	ohm-m
RES(64N)	Normal resistivity 64 inch	8144	ohm-m
LATERAL	Lateral resistivity	8144	ohm-m
SPR	Single point resistivity	8144	ohm
SP	Self Potential	8144	V

Rev. 0	Date 2006-09-13	Drawn by JJJ/JRI	Control UTN	Approved UTN	 <small>Rambøll, Brededevej 2, DK-2830 Virum Phone + 45 45 98 60 00, Fax + 45 45 98 67 00</small>
Job 547310A	Scale 1:500				
<hr/> <h2>SKB geophysical borehole logging</h2> <h3>Borehole HLX38</h3> <hr/> <p>Presentation</p>					Filename: HLX38_Presentation.wcl Drawing no.: 7.1







Borehole HLX39. Drawing no. 8.1. Borehole logs


Co-ordinates in RT90 2,5 gon V 0:-15

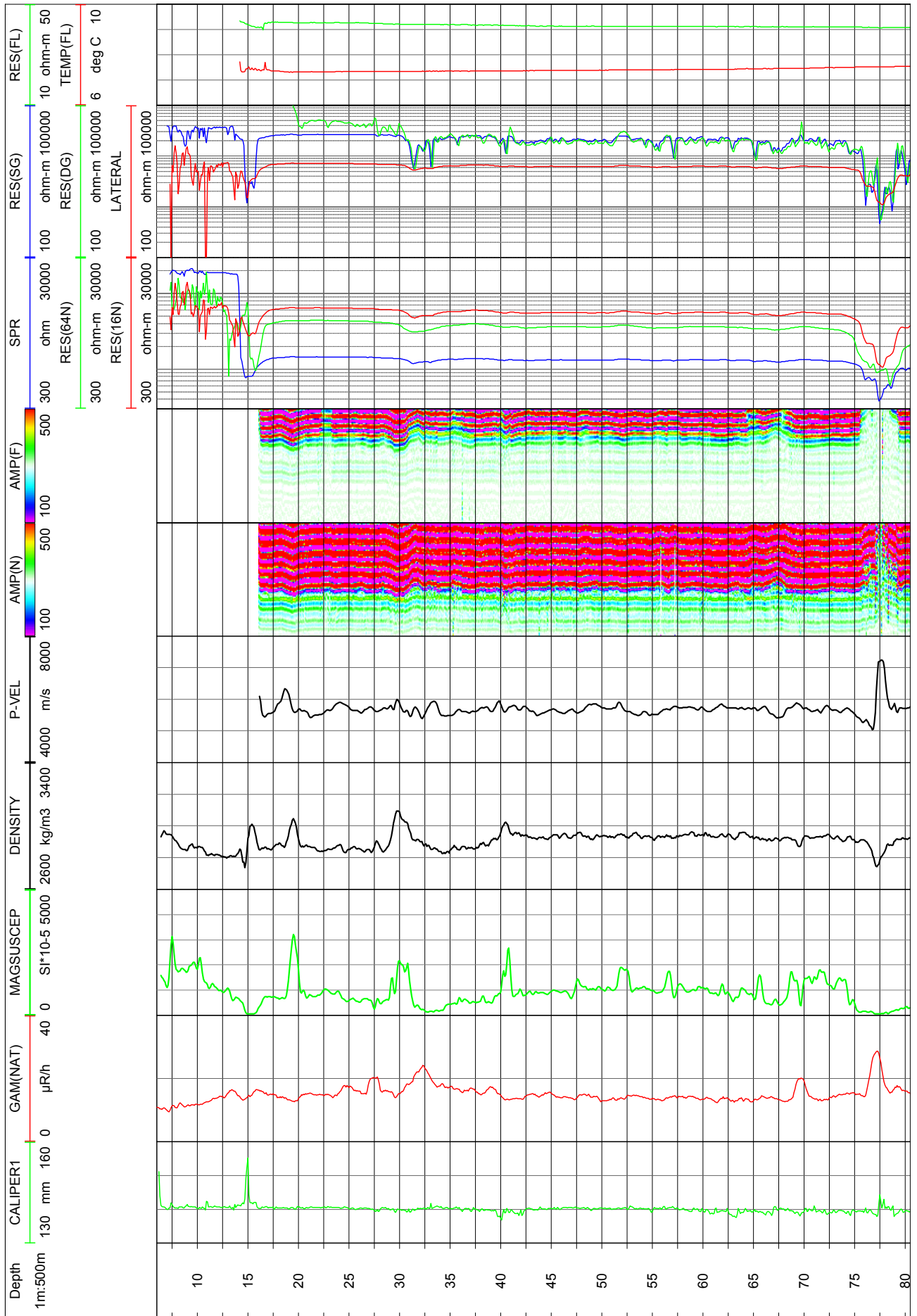
Northing: 6366887.869m Easting: 1546880.479m Elevation: 27.044m, RHB70

Diameter: 138mm
 Reaming Diameter:
 Outer Casing: 168mm
 Inner Casing: 160mm
 Casing Length: 6.02m
 Borehole Length: 199.3m
 Cone:
 Inclination at ground surface: -59.348°
 Azimuth: 14.291° GN
 Comments:

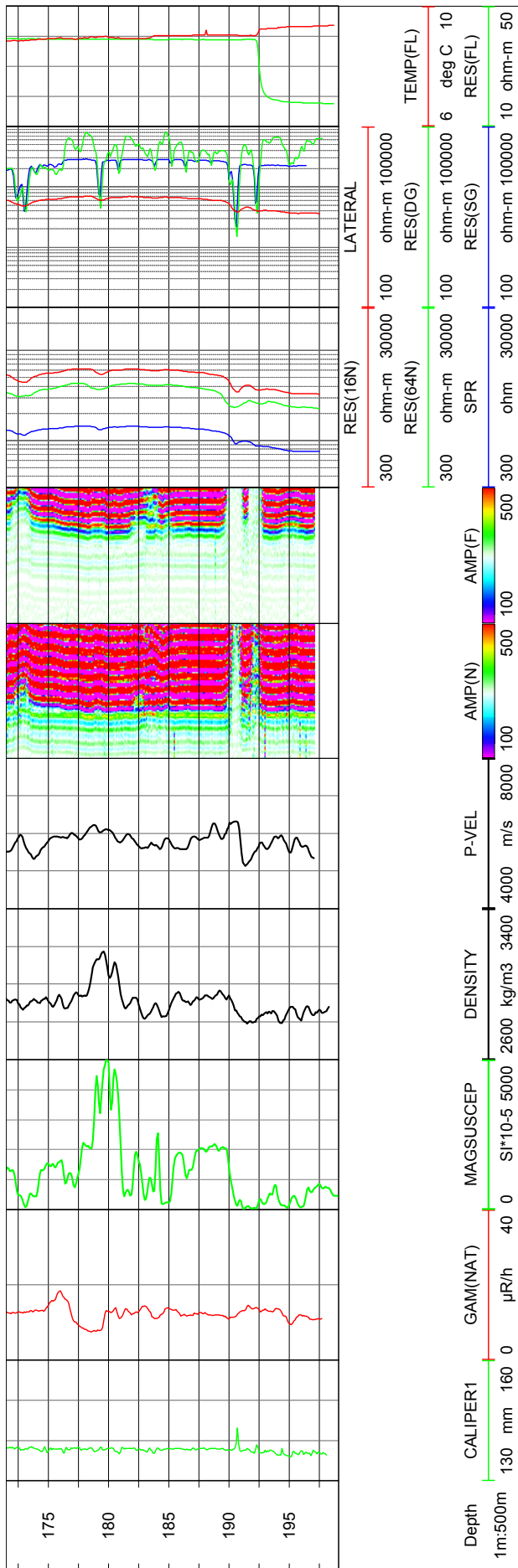
Borehole logging programme

Name	Description	Tool	Unit
CALIPER1	Caliper, 1-arm	9139	mm
DENSITY		9139	kg/m ³
RES(SG)	Focused guard log resistivity, 128 cm	9139	ohm-m
GAM(NAT)	Natural gamma	9072	µR/h
TEMP(FL)	Fluid temperature	9042	deg C
RES(FL)	Fluid resistivity	9042	ohm-m
RES(DG)	Focused guard log resistivity, 300cm	9072	ohm-m
P-VEL	P-wave velocity	9310	m/s
AMP(N)	Full wave form, near receiver	9310	µs
AMP(F)	Full wave form, far receiver	9310	µs
MAGSUSCEP	Magnetic susceptibility	8622	SI*10-5
CALIPER 3D	Caliper, high resolution 360 degrees	HiRAT	mm
CALIPER MEAN	High resolution 1D caliper	HiRAT	mm
AZIMUTH MN	Borehole azimuth magnetic north	HiRAT	deg
DIP	Borehole inclination from horizontal	HiRAT	deg
RADIUS	360 degrees orientated acoustic radius	HiRAT	mm
AMPLITUDE	360 degrees orientated acoustic amplitude	HiRAT	-
THORIUM	Spectral gamma, Thorium component	9080	PPM
URANIUM	Spectral gamma, Uranium component	9080	PPM
POTASSIUM	Spectral gamma, Potassium component	9080	percent
RES(16N)	Normal resistivity 16 inch	8144	ohm-m
RES(64N)	Normal resistivity 64 inch	8144	ohm-m
LATERAL	Lateral resistivity	8144	ohm-m
SPR	Single point resistivity	8144	ohm
SP	Self Potential	8144	V

Rev. 0	Date 2006-09-13	Drawn by JRI	Control UTN	Approved UTN	 <small>Ramboll, Bredenevej 2, DK-2830 Virum Phone + 45 45 98 60 00, Fax + 45 45 98 67 00</small>
Job 547310A	Scale 1:500				
<hr/> SKB geophysical borehole logging Borehole HLX39					Filename: HLX39_Presentation.wcl
<hr/> Presentation					Drawing no.: 8.1







Borehole HLX40. Drawing no. 9.1. Borehole logs


Co-ordinates in RT90 2,5 gon V 0:-15

Northing: 6366906.756m Easting: 1546943.948m Elevation: 25.737m, RHB70

Diameter: 138mm
 Reaming Diameter: -
 Outer Casing: 168mm
 Inner Casing: 160mm
 Casing Length: 6.02m
 Borehole Length: 199.5m
 Cone:
 Inclination at ground surface: -59.572°
 Azimuth: 11.028° GN
 Comments:

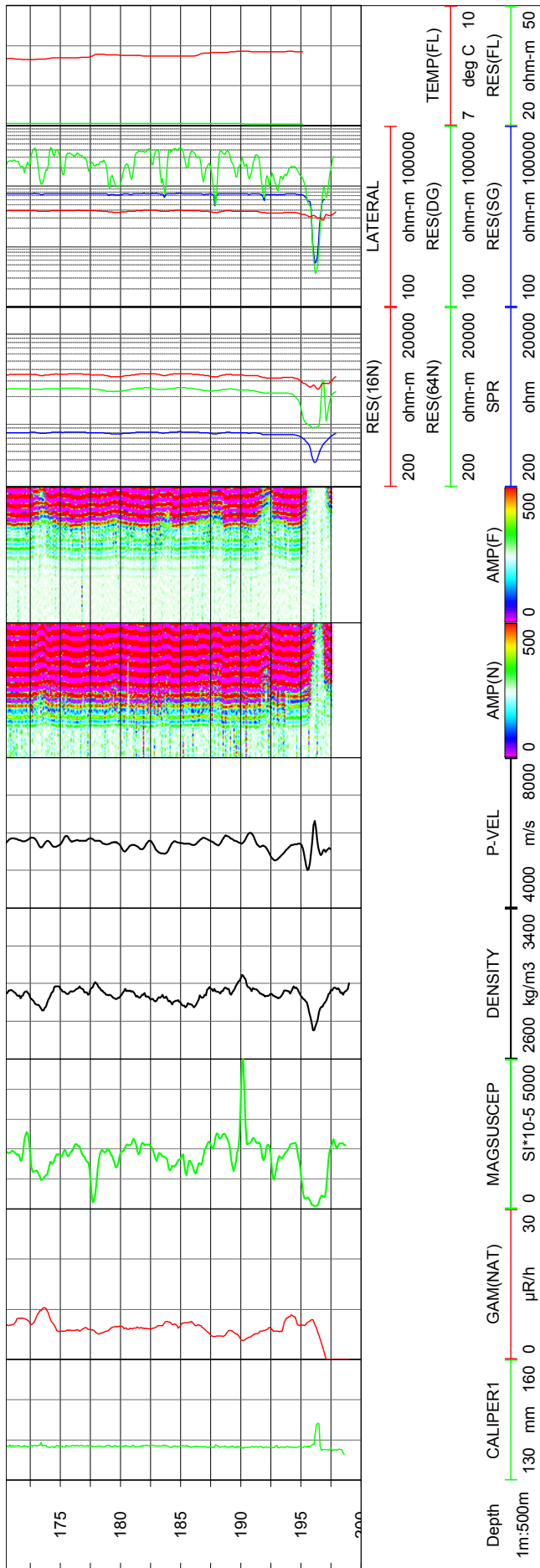
Borehole logging programme

Name	Description	Tool	Unit
CALIPER1	Caliper, 1-arm	9139	mm
DENSITY	Gamma-gamma density	9139	kg/m ³
RES(SG)	Focused guard log resistivity, 128 cm	9139	ohm-m
GAM(NAT)	Natural gamma	9072	μR/h
TEMP(FL)	Fluid temperature	9042	deg C
RES(FL)	Fluid resistivity	9042	ohm-m
RES(DG)	Focused guard log resistivity, 300cm	9072	ohm-m
P-VEL	P-wave velocity	9310	m/s
AMP(N)	Full wave form, near receiver	9310	μs
AMP(F)	Full wave form, far receiver	9310	μs
MAGSUSCEP	Magnetic susceptibility	8622	SI*10-5
CALIPER 3D	Caliper, high resolution 360 degrees	HiRAT	mm
CALIPER MEAN	High resolution 1D caliper	HiRAT	mm
AZIMUTH MN	Borehole azimuth magnetic north	HiRAT	deg
DIP	Borehole inclination from horizontal	HiRAT	deg
RADIUS	360 degrees orientated acoustic radius	HiRAT	mm
AMPLITUDE	360 degrees orientated acoustic amplitude	HiRAT	-
THORIUM	Spectral gamma, Thorium component	9080	PPM
URANIUM	Spectral gamma, Uranium component	9080	PPM
POTASSIUM	Spectral gamma, Potassium component	9080	percent
RES(16N)	Normal resistivity 16 inch	8144	ohm-m
RES(64N)	Normal resistivity 64 inch	8144	ohm-m
LATERAL	Lateral resistivity	8144	ohm-m
SPR	Single point resistivity	8144	ohm
SP	Self Potential	8144	V

Rev. 0	Date 2006-09-13	Drawn by JIJ/JRI	Control UTN	Approved UTN	 <small>Ramboll, Bredevej 2, DK-2830 Virum Phone + 45 45 98 60 00, Fax + 45 45 98 67 00</small>
Job 547310A	Scale 1:500				
<hr/> SKB geophysical borehole logging Borehole HLX40 <hr/> Presentation					Filename: HLX40_Presentation.wcl Drawing no.: 9.1







Borehole HLX41. Drawing no. 10.1. Borehole logs


Co-ordinates in RT90 2,5 gon V 0:-15

Northing: 6367013.201m Easting: 1547017.609m Elevation: 21.797m, RHB70

Diameter: 139-140mm
 Reaming Diameter: -
 Outer Casing: 168mm
 Inner Casing: 160mm
 Casing Length: 6.02m
 Borehole Length: 199.5m
 Cone:
 Inclination at ground surface: -59.087°
 Azimuth: 208.294° GN
 Comments:

Borehole logging programme

Name	Description	Tool	Unit
CALIPER1	Caliper, 1-arm	9139	mm
DENSITY		9139	kg/m³
RES(SG)	Focused guard log resistivity, 128 cm	9139	ohm-m
GAM(NAT)	Natural gamma	9072	µR/h
TEMP(FL)	Fluid temperature	9042	deg C
RES(FL)	Fluid resistivity	9042	ohm-m
RES(DG)	Focused guard log resistivity, 300cm	9072	ohm-m
P-VEL	P-wave velocity	9310	m/s
AMP(N)	Full wave form, near receiver	9310	µs
AMP(F)	Full wave form, far receiver	9310	µs
MAGSUSCEP	Magnetic susceptibility	8622	SI*10-5
CALIPER 3D	Caliper, high resolution 360 degrees	HiRAT	mm
CALIPER MEAN	High resolution 1D caliper	HiRAT	mm
AZIMUTH MN	Borehole azimuth magnetic north	HiRAT	deg
DIP	Borehole inclination from horizontal	HiRAT	deg
RADIUS	360 degrees orientated acoustic radius	HiRAT	mm
AMPLITUDE	360 degrees orientated acoustic amplitude	HiRAT	-
THORIUM	Spectral gamma, Thorium component	9080	PPM
URANIUM	Spectral gamma, Uranium component	9080	PPM
POTASSIUM	Spectral gamma, Potassium component	9080	percent
RES(16N)	Normal resistivity 16 inch	8144	ohm-m
RES(64N)	Normal resistivity 64 inch	8144	ohm-m
LATERAL	Lateral resistivity	8144	ohm-m
SPR	Single point resistivity	8144	ohm
SP	Self Potential	8144	V

Rev. 0	Date 2006-09-13	Drawn by JRI	Control UTN	Approved UTN	 <p><small>Ramboll, Bredøvej 2, DK-2830 Virum Phone + 45 45 98 60 00, Fax + 45 45 98 67 00</small></p>
Job 547310A	Scale 1:500				
<hr/> <h2>SKB geophysical borehole logging</h2> <h3>Borehole HLX41</h3> <hr/> <p>Presentation</p>					Filename: HLX41_Presentation.wcl Drawing no.: 10.1

